

# WHEELCHAIRS

## 2014 Product Catalog

Drive Medical's broad line of wheelchairs exceeds the market demand for quality, selection, reliability & value.



*for the road ahead™*  
**drive**



### About Drive

The Company markets and distributes its products to customers located throughout North America, Europe, Central America, South America, the Middle East and Asia.

Drive Medical Design and Manufacturing is one of the fastest growing global manufacturers and distributors of durable medical equipment. The Company markets and distributes its products to customers located throughout North America, Europe, Central America, South America, the Middle East and Asia.

### Philosophy/Mission

Our mission is to manufacture and market world class products which focus on innovation, functionality and value to improve the quality of life and to promote independence for the individuals that use our products. The Company is dedicated to its customers by consistently offering the best quality and most functional products across a broad spectrum of health care providers' needs; better value and aggressive pricing; world-class customer service and technical support; friendly people to work with; and ongoing innovation.

### Facilities

Drive has corporate offices and distribution facilities located throughout the United States, Canada, the United Kingdom, Germany, Romania, China and Taiwan. The Company's North America Technical Service Center is located in Bohemia, New York.

### Office Locations

#### Corporate Headquarters

99 Seaview Boulevard  
Port Washington, NY 11050  
t: 877.224.0946 | 516.998.4600

#### CHAD® / Inovo

401 Leonard Blvd N  
Lehigh Acres, FL 33971

### Distribution Centers

#### Southeast and Central US

#### Distribution Center

4131 Southmeadow Parkway West  
Suite 100  
Atlanta, GA 30349

#### West Coast Distribution Center

3550-B Jurupa Street  
Ontario, CA 91761

#### North East Distribution Center

200 Docks Corner Road  
Suite 241  
South Brunswick, NJ 08810

#### International Distribution Center

Drive Medical Canada Inc.  
50 Vogell Road, Unit 7  
Richmond Hill, Ontario L4B 3K6

#### Technical Service Center

1101 Lakeland Avenue  
Suite 100  
Bohemia, NY 11716  
t: 866.694.5085

For international Operations visit  
[www.drivemedical.com](http://www.drivemedical.com)

### Icon Library



New  
Product



1-Pack  
Available



Allergy  
Free



Environment  
Friendly



Fashion  
Colors



Latex  
Free



Retail  
Packaged



Tool-free  
Assembly



Weight  
Capacity



Bariatric Weight  
Capacity





## Travelite Transport Chair

Item #	Seat Width	UOM
TC005GY	18"	1/cs

- The Travelite Chair in a Bag is a lightweight yet sturdy aluminum transport chair in gunmetal gray.
- It is easily transportable and comes with a compact carry bag with wheels making it ideal for traveling. (Figure A - B)
- Folds for storage and transportation. (Figure C)
- It is ideal for use indoors and outdoors.
- 18" square nylon seat comes with lift-up straps.
- Comes with wheel locks. 8" solid tires.
- Comes with padded, flip-up desk arms and height adjustable footrests.

### specifications

Overall Dimensions	22.5" (W) (open)   11.5" (W) (closed) x 37.5" (H)
Seat-To-Floor Height	19"
Back Height	17.5"
Seat Dimensions	18" (W) x 18" (D)
Overall Length (with riggings)	33"
Weight	20.5 lbs.
Carton Shipping Weight	23.2 lbs.
Weight Limit	250 lbs.
Warranty	Limited Lifetime

## Super Light, Folding Transport Chair with Carry Bag and Flip-Back Arms

Item #	Color	Seat Width	UOM
SL18	Silver Frame and Blue Upholstery	18"	1/cs

- Padded flip-back armrests. Fold-down footrests.
- Weighs only 19 lbs. Easy to push or transport.
- Aluminum frame with lightweight nylon upholstery.
- Composite wheels are lightweight and maintenance free.
- Folds like a conventional folding chair. (Figure A)
- Comes with carry bag (item #835) with shoulder strap. (Figure B)
- Standard rear wheel locks and seat belt.

### specifications

Overall Dimensions	23" (W) (open) x 37" (H)
Seat-To-Floor Height	20"
Back Height	17"
Seat Dimensions	18" (W) x 17" (D)
Overall Length	30"
Weight	19 lbs.
Carton Shipping Weight	24 lbs.
Weight Limit	250 lbs.
Warranty	Limited Lifetime

### accessories

835N	Replacement Carry Bag	1/ea
------	-----------------------	------



## Poly-Fly High Strength, Lightweight Wheelchair/Flyweight Transport Chair Combo

Item #	Seat Width	Color		UOM
TR16	16"	Silver Frame and Black Upholstery		1/cs
TR18	18"	Silver Frame and Black Upholstery		1/cs
TR20	20"	Silver Frame and Black Upholstery		1/cs

- Can be used as standard self-propelled wheelchair or a transport chair all in one.
- Quick-release 24" wheels can be removed to transition self-propelled chair to a transport chair. (Figure A - B)

### specifications

Overall Width with 24" Wheels (TR16)	23.5" (open)   12"(closed)
Overall Width with 24" Wheels (TR18)	24.5" (open)   12"(closed)
Overall Width with 24" Wheels (TR20)	25.5" (open)   12"(closed)
Overall Height w/ 24" Wheels	37"
Seat-To-Floor Height	19.5"
Back Height	16"
Seat Depth	16"
Overall Length w/ Riggings	42"
Weight w/ 24" Wheels (TR16   TR18   TR20)	33 lbs.   34 lbs   36 lbs.
Carton Shipping Weight w/ 24" Wheels (TR16   TR18   TR20)	38 lbs.   39 lbs.   41 lbs.
Weight Limit	250 lbs.
Warranty	Limited Lifetime

- All-aluminum frame.
- Comes with two sets of wheel locks: One for use with wheelchair, one for use with transport chair.
- Back folds down with deluxe back release. (Figure C)
- Nylon upholstery.
- Comes standard with swing-away footrests with composite foot plates and heel loops.
- 8" casters.
- Comes with anti-tippers.
- STDELR-TF - Swing-away Elevated Leg rest, Tool-free, (Optional front riggings).
- Weight Capacity: 250 lbs.



Weights  
only 14.5 lbs.



## TranSport Aluminum Transport Chair

Item #	Seat Width	Color	UOM
TS19	19"	Blue Upholstery, Blue Frame 	1/cs

- Weighs 14.5 lbs.
- Aluminum frame is lightweight and strong.
- Frame magnets keep footrests secure against frame to prevent swinging open when the chair is carried.
- Padded flip-back arms are removable.
- Upholstery is comfortable, lightweight and easy to clean.
- Two-way back release allows to push or pull lever.
- The transport chair conveniently folds for travel and storage. (Figure A)
- Back folds forward.
- Comes with tool-free height adjustable swing-away footrests.
- Aluminum rear wheel locks.
- Weight Capacity: 250 lbs.

### specifications

Overall Width	24.5" (W) (open)   10" (W) (closed)
Overall Height	36"
Seat-To-Floor Height	18"
Back Height	16"
Seat Dimensions	19" (W) x 16" (D)
Overall Length w/ Riggings	38"
Weight	14.5 lbs.
Carton Shipping Weight	19.5 lbs.
Weight Limit	250 lbs.
Warranty	Limited Lifetime



Weights  
only 14.5 lbs.



## Fly-Lite Aluminum Transport Chair

Item #	Seat Width	Color		UOM
DFL19-BL	19"	Blue Frame and Blue Plaid Upholstery		1/cs
DFL19-BLK	19"	Black Frame and Black/White/Red Plaid Upholstery		1/cs
DFL19-RD	19"	Burgundy Frame and Black Upholstery		1/cs

- Weighs only 17 lbs.
- Aluminum frame is lightweight and strong.
- Comes with carry pocket on backrest.
- Comes with seat belt for added safety.
- Attractive plaid style nylon upholstery. (Figure A)
- Comes with handy carry pocket on back. (Figure B)
- Tool-free, height-adjustable swing-away footrests come standard. Optional leg rests available. (Model# STDELR-TF)
- 8" casters in rear. 6" casters in front.
- Back folds down for storage and transport and features deluxe back release. (Figure C)
- Comes with aluminum rear wheel locks.
- Convenient cup holder can easily attach to chair. Sold separately. (Model# STDS1040S) (Figure D)
- Weight Capacity: 300 lbs.

### specifications

Overall Width	22" (open)   9" (closed)
Overall Height	36"
Seat-To-Floor Height	18"
Back Height	18"
Seat Dimensions	19" (W) x 15.5" (D)
Overall Length w/ Riggings	33"
Weight	17 lbs.
Carton Shipping Weight	19.5 lbs.
Weight Limit	300 lbs.
Warranty	Limited Lifetime

### accessories

STDS1040S	Universal Cup Holder	1/ea
-----------	----------------------	------





Weighs  
only 19 lbs.

## Aluminum Transport Chair

Item #	Seat Width	Color	UOM
ATC17-BK	17"	Black Frame and Black Upholstery	1/cs
ATC17-BL	17"	Blue Frame and Black Upholstery	1/cs
ATC17-RD	17"	Red Frame and Black Upholstery	1/cs
ATC17-SL	17"	Silver Frame and Black Upholstery	1/cs
ATC19-BK	19"	Black Frame and Black Upholstery	1/cs
ATC19-BL	19"	Blue Frame and Black Upholstery	1/cs
ATC19-RD	19"	Red Frame and Black Upholstery	1/cs
ATC19-SL	19"	Silver Frame and Black Upholstery	1/cs

### specifications

Overall Width (ATC17)	20" (open)   9" (closed)
Overall Width (ATC19)	22" (open)   9" (closed)
Seat-To-Floor Height	19"
Seat Dimensions (ATC17)	17" (W) x 16" (D)
Seat Dimensions (ATC19)	19" (W) x 16" (D)
Weight	19 lbs.
Carton Shipping Weight	24 lbs.
Overall Length w/ Riggings	33"
Overall Height	39.5"
Weight Limit	300 lbs.
Warranty	Limited Lifetime

- Weighs only 19 lbs.
- Aluminum frame is lightweight and strong.
- Composite 8" wheels are lightweight and maintenance free.
- Both 17" and 19" come with swing-away footrests.
- Comes with seat belt for added safety.
- Padded armrests provide additional comfort.
- Nylon upholstery is comfortable, lightweight and easy to clean. Back folds down for storage and transport.
- Aluminum casted back-release hinge allows back to fold down for easy storage and transport.

### accessories

STD51040S	Universal Cup Holder	1/ea
-----------	----------------------	------



Weighs  
only 19 lbs.



## Deluxe Fly-Weight Aluminum Transport Chair

Item #	Seat Width	Color		UOM
FW17BL	17"	Blue Frame and Black Upholstery		1/cs
FW17GR	17"	Green Frame and Black Upholstery		1/cs
FW17SL	17"	Silver Frame and Black Upholstery		1/cs
FW17DB	17"	Black Frame and Tan Plaid Upholstery		1/cs
FW17BG	17"	Green Frame and Burgundy Upholstery		1/cs
FW19BL	19"	Blue Frame and Black Upholstery		1/cs
FW19GR	19"	Green Frame and Black Upholstery		1/cs
FW19SL	19"	Silver Frame and Black Upholstery		1/cs
FW19DB	19"	Black Frame and Tan Plaid Upholstery		1/cs
FW19BG	19"	Green Frame and Burgundy Upholstery		1/cs

### specifications

Overall Width (FW17)	20" (open)   9" (closed)
Overall Width (FW19)	22" (open)   9" (closed)
Product Overall Height (FW17   FW19)	36"   37.25"
Seat-To-Floor Height	19"
Back Height	18"
Seat Dimensions (FW17)	17" (W) x 16" (D)
Seat Dimensions (FW19)	19" (W) x 16" (D)
Overall Length w/ Riggings	33"
Weight	19 lbs.
Carton Shipping Weight	24 lbs.

- Aluminum frame weighs only 19 lbs.
- Tan Plaid (shown) or Burgundy upholstery. (Figure A)
- Composite wheels are lightweight and maintenance free.
- Deluxe all-aluminum rear wheel locks.
- Comes with carry pocket on backrest.
- Both 17" and 19" come with tool-free, swing-away footrests.
- Comes with seat belt for added safety.
- Back folds down for easy storage and transport (Figure B - C)
- Weight Capacity: 300 lbs.

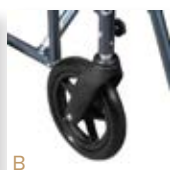
### accessories

STDS1040S	Universal Cup Holder	1/ea
-----------	----------------------	------







Weights  
only 19 lbs.



## Deluxe Fly-Weight Aluminum Transport Chair with Removable Casters

Item #	Seat Width	Color		UOM
RTLFW19RW-BL	19"	Blue Frame, Black Upholstery		1/cs
RTLFW19RW-RD	19"	Red Frame, Black Upholstery		1/cs

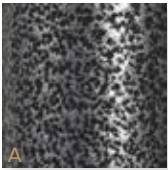
- Weighs only 19 lbs.
- Aluminum frame for lightweight strength and durability.
- Easy folding and storage in closet or trunk. (Figure A)
- Composite wheels are lightweight and maintenance free.
- 8" wheels in front and rear easily remove without tools. (Figure B - C)
- Deluxe back release. (Figure D)
- Deluxe, all-aluminum rear wheel locks.
- Comes with carry pocket on backrest. (Figure E)
- Both 17" and 19" come with tool-free, swing-away footrests.
- Comes with seat belt for added safety.
- Flared arms allow the back to be folded virtually flat. (Figure F)
- Soft, plush nylon upholstery.
- Back folds down for easy storage and transport.
- Convenient cup holder can easily attach to chair. Sold separately. (Model# STDS1040S)
- Weight Capacity: 300 lbs.

### specifications

Overall Width	22" (open)   9" (closed)
Overall Height	37.25"
Seat To-Floor Height	19"
Back Height	18"
Seat Dimensions	19" (W) x 16" (D)
Overall Length w/Riggings	33"
Weight	19 lbs.
Carton Shipping Weight	24 lbs.
Weight Limit	300 lbs.
Warranty	Limited Lifetime

### accessories

STDS1040S	Universal Cup Holder	1/ea
-----------	----------------------	------



## Steel Transport Chair

Item #	Seat Width	Color	UOM
TR37E-SV	17"	Silver Vein Frame, Black Upholstery	1/cs
TR39E-SV	19"	Silver Vein Frame, Black Upholstery	1/cs

- Weighs 26 lbs.
- Attractive silver vein finish. (Figure A)
- Available in 17" or 19" seat widths.
- Back folds down for storage and transport. (Figure B)
- Swing-away footrests come standard.

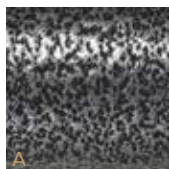
- Padded armrests provide additional comfort.
- 8" casters in front and rear.
- Comes with attractive nylon upholstery that is durable and easy to clean.
- Standard rear wheel locks.
- Comes with upholstery handles to fold chair.
- Convenient cup holder can easily attach to chair. Sold separately. (Model# STDS1040S)

### specifications

Overall Width (TR37)	21.5" (open)   8" (closed)
Overall Width (TR39)	23.5" (open)   10.75" (closed)
Overall Height	39"
Seat-To-Floor Height	19"
Back Height	18"
Seat Dimensions (TR37)	17" (W) x 16" (D)
Seat Dimensions (TR39)	19" (W) x 16" (D)
Overall Length w/Riggings	33"
Weight	26 lbs.
Carton Shipping Weight	31 lbs.
Weight Limit	250 lbs.
Warranty	Limited Lifetime

### accessories

STDS1040S	Universal Cup Holder	1/ea
-----------	----------------------	------



## Steel Transport Chair

### With Removable Arms

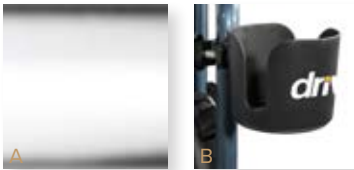
Item #	Seat Width	Color	UOM
TR37E-SV-DDA	17"	Silver Vein Frame, Black Upholstery	1/cs
TR39E-SV-DDA	19"	Silver Vein Frame, Black Upholstery	1/cs

- Weighs 26 lbs.
- Attractive in silver vein finish. (Figure A)
- Removable desk arms.
- Composite 8" wheels are lightweight and maintenance free.
- Comes with swing-away footrests.
- Padded armrests provide additional comfort.
- Nylon upholstery is comfortable, lightweight and easy to clean.
- Comes with seat belt for added safety.
- Back folds down for easy storage and transport. (Figure B)
- Comes with upholstery handles to fold chair.
- Standard rear wheel locks.
- Convenient cup holder can easily attach to chair. Sold separately. (Model# STDS1040S)

specifications	
Overall Width (TR37)	21.5" (open)   8" (closed)
Overall Width (TR39)	23.5" (open)   8" (closed)
Overall Height	39"
Seat-To-Floor Height	19"
Back Height	18"
Seat Depth	17" - 19" (W) x 16" (D)
Weight	26 lbs.
Carton Shipping Weight	31 lbs.
Weight Limit	250 lbs.
Warranty	Limited Lifetime

accessories		
STDS1040S	Universal Cup Holder	1/ea





## Deluxe Go-Kart Steel Transport Chair (Chrome)

Item #	Seat Width	Color	UOM
TR17	17"	Chrome Frame, Black Upholstery	1/cs
TR19	19"	Chrome Frame, Black Upholstery	1/cs

- Weighs 26 lbs.
- Carbon steel frame with double-coated chrome provides an attractive, chip-proof, easy to maintain finish. (Figure A)
- Composite 8" wheels are lightweight and maintenance free.
- Both 17" and 19" come with swing-away footrests.
- Padded armrests provide additional comfort.

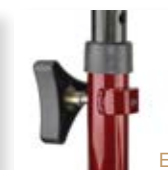
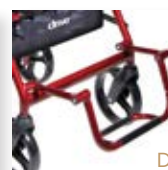
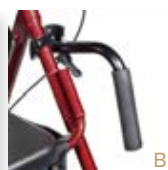
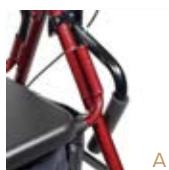
- Nylon upholstery is comfortable, lightweight and easy to clean.
- Back folds down for storage and transport.
- Aluminum casted back-release hinge allows back to fold down for easy storage and transport.
- Comes with seat belt for added safety.
- Comes with carry pocket on backrest.
- Comes with upholstery handles to fold chair.
- Standard rear wheel locks.
- Convenient cup holder can easily attach to chair. Sold separately. (Model #STDS1040S)

### specifications

Overall Width (TR17)	20" (open)   9" (closed)
Overall Width (TR19)	22" (open)   9" (closed)
Seat-To-Floor Height	19"
Back Height	18"
Seat Dimensions (TR17)	17" (W) x 16" (D)
Seat Dimensions (TR19)	19" (W) x 16" (D)
Overall Length with Riggings	33"
Weight	26 lbs.
Carton Shipping Weight	31.5 lbs.
Weight Limit	300 lbs.
Warranty	Limited Lifetime




### accessories

STDS1040S	Universal Cup Holder	1/ea
-----------	----------------------	------



## Duet Rollator/Transport Chair

Padded Seat and Loop Locks

Item #	Color	UOM
795B	Blue 	1/cs
795BK	Black 	1/cs
795BU	Burgundy 	1/cs

- Combines the features of a rollator and transport chair in one unit. An individual can ambulate independently or be pushed safely by a caregiver.
- To use as a transport chair, the Duet has locking flip-up armrests (Figure A - C) and a flip-down footrest (Figure D) to aid the user. A safety lock release is used to store the footrest while using the Duet for ambulation.
- The tool-free two-position contoured padded backrest is reversible depending on whether you are using the Duet as a rollator or transport chair mode.
- Comes with padded seat with carry pouch for added privacy and security of personal items. Inside the pouch is a handle to aid with the folding.
- The folding frame has a lock-out feature to ensure the unit stays open while in use and ensures the unit will stay folded during transport.
- 8" casters are ideal for indoor and outdoor use.
- Handles are adjustable in height, with self-threading knob. (Figure E)

### specifications

Overall Dimensions	25.5" W (Open) x 37" (H) x 26" (L)
Seat To-Floor Height	21"
Handle Height Range	31.5" - 37"
Back Height	36"
Seat Depth	13.5" (W) x 13" (D)
Weight	19 lbs.
Carton Shipping Weight	23 lbs.
Weight Limit	300 lbs.
Warranty	Limited Lifetime



## Lightweight Expedition Aluminum Transport Chair

With 12" Rear "Flat-Free" Wheels

Item #	Color	UOM
EXP19LTBL	Blue	1/cs
EXP19LTRD	Red	1/cs

- Weighs only 19 lbs.
- Available in blue or red frames.
- Folds flat for easy transport. (Figure A)
- Handy lever on chair back makes it easy and convenient to fold back down. (Figure B)
- Comes with seat belt.
- Companion activated wheel locks.
- 12" rear "flat-free" wheels.

### specifications

Overall Width	22"(open)   10.75"(closed)
Overall Height	38"
Seat-To-Floor Height	19"
Back Height	18"
Seat Dimensions	19" (W) x 16"(D)
Overall Length w/Riggings	38"
Weight	19 lbs.
Carton Shipping Weight	24 lbs.
Weight Limit	300 lbs.
Warranty	Limited Lifetime

## 22" Bariatric Aluminum Transport Chair

With 12" Rear "Flat-Free" Wheels

Item #	Color	Seat Width	UOM
ATC22-R	Red	22"	1/cs

- Weighs only 33 lbs. Supports individuals up to 450 lbs.
- Attachable push bar with padded foam grip. (Figure A)
- 12" rear flat-free wheels. Comes with seat belt.
- Comes with swing-away footrests and anti-tippers.
- Back folds down for convenient storage. (Figure B)
- Padded armrests provide additional comfort.
- Heavy-duty, nylon reinforced upholstery.
- Comes with hand wheel lock lever and companion activated wheel locks.

### specifications

Overall Width	30" (Open)   12" (Closed)
Overall Height	37.5"
Seat To-Floor Height	21"
Back Height	16"
Seat Dimensions	22" (W) x 18" (D)
Overall Length w/ Riggings	41"
Weight	33 lbs.
Carton Shipping Weight	39 lbs.
Weight Limit	450 lbs.
Warranty	Limited Lifetime





## Bariatric Steel Transport Chair

Item #	Color	Seat Width	UOM
BTR20-B	Blue	20"	1/cs
BTR20-R	Red	20"	1/cs
BTR22-B	Blue	22"	1/cs
BTR22-R	Red	22"	1/cs

- Supports individuals up to 450 lbs.
- Reinforced steel frame provides added support.
- Dual, reinforced steel cross braces.
- Available in blue or red frames.

- 12" rear flat free wheels.
- Comes with swing-away footrests.
- Padded armrests provide additional comfort.
- Heavy-duty, nylon reinforced upholstery with a back carry pouch.
- Removable, reversible desk-length arms.
- Companion activated wheel locks.

specifications	
Overall Width (BTR20)	24.5" (open)   9" (closed)
Overall Width (BTR22)	26.5" (open)   11.5" (closed)
Overall Height	37"
Seat-To-Floor Height	19.5"
Back Height	16"
Seat Dimensions (BTR20)	20" (W) x 18" (D)
Seat Dimensions (BTR22)	22" (W) x 18" (D)
Overall Length w/Riggings	38"
Weight (BTR20   BTR22)	45 lbs.   49 lbs.
Carton Shipping Weight (BTR20   BTR22)	50 lbs.   54 lbs.
Weight Limit	450 lbs.
Warranty:	Limited Lifetime

## SPECIFICATIONS FOR WHEELCHAIRS

	Seat Width	Overall Width (open)	Overall Width (closed)	Overall Height	Seat-To-Floor Height	Back Height	Seat Depth	Overall Length (w/riggings)	Product Weight	Carton Shipping Weight	Weight Limit
Rebel	18"	25.5"	10.5"	35"	19.5"	17"	16"	43"	37 lbs.	42 lbs.	300 lbs.
Blue Streak	18"	24"	12.5"	36"	19.5"	16"	16"	42"	41.25 lbs.	47 lbs.	250 lbs.
	20"	26"	12.5"	36"	19.5"	16"	16"	42"	41.25 lbs.	47 lbs.	250 lbs.
Silver Sport 1	18"	24"	12.5"	36"	19.5"	16"	16"	42"	41 lbs.	48 lbs.	300 lbs.
Silver Sport 2	16"	24"	12.5"	36"	17.5" - 19.5"	16"	16"	42"	40 lbs.	48 lbs.	250 lbs.
	18"	26"	12.5"	36"	17.5" - 19.5"	16"	16"	42"	41 lbs.	49 lbs.	300 lbs.
Chrome Sport	20"	28"	12.5"	36"	17.5" - 19.5"	16"	16"	42"	42 lbs.	50 lbs.	350 lbs.
	16"	24"	12.5"	36"	17.5" - 19.5"	16"	16"	42"	39 lbs.	45 lbs.	250 lbs.
	18"	26"	12.5"	36"	17.5" - 19.5"	16"	16"	42"	40 lbs.	46 lbs.	300 lbs.
	20"	28"	12.5"	36"	17.5" - 19.5"	16"	16"	42"	41 lbs.	47 lbs.	350 lbs.
Silver Sport Reclining	16"	23"	12"	50"	20.5"	21"   31"	16"	50"	59 lbs.	66 lbs.	300 lbs.
	18"	25"	12"	50"	20.5"	21"   31"	16"	50"	60 lbs.	67 lbs.	300 lbs.
	20"	28"	12"	50"	20.5"	21"   31"	16"	50"	61 lbs.	67.5 lbs.	350 lbs.
Sentra EC HD	20"	28"	12.5"	36"	17.5" - 19.5"	16"	18"	42"	56 lbs.	62 lbs.	450 lbs.
	22"	30"	12.5"	36"	17.5" - 19.5"	18"	18"	42"	57 lbs.	63 lbs.	450 lbs.
	24"	32"	12.5"	36"	17.5" - 19.5"	18"	18"	42"	58 lbs.	64 lbs.	450 lbs.
Sentra X HD	20"	29"	13"	37"	17.5" - 19.5"	18"	18"	42"	54 lbs.	60 lbs.	500 lbs.
	22"	31"	13"	37"	17.5" - 19.5"	18"	18"	42"	56 lbs.	62 lbs.	500 lbs.
	24"	32.5"	13"	37"	17.5" - 19.5"	18"	18"	42"	66.25 lbs.	72 lbs.	500 lbs.
Sentra EC HD XXW	26"	34.5"	14"	35"	19.5"	18"	20"	43"	62 lbs.	68 lbs.	700 lbs.
	28"	37"	14.5"	35"	19.5"	18"	20"	43"	64 lbs.	70 lbs.	700 lbs.
	30"	39"	15"	35"	19.5"	18"	20"	43"	66 lbs.	72 lbs.	700 lbs.
Sentra HD XXW	26"	35"	14.5"	38"	17" - 19"	16"	20"	47"	87 lbs.	95 lbs.	700 lbs.
	28"	37"	14.5"	38"	17" - 19"	16"	20"	47"	88 lbs.	98 lbs.	700 lbs.
	30"	39"	14.5"	38"	17" - 19"	16"	20"	47"	89 lbs.	99 lbs.	700 lbs.
Sentra Full Reclining	14"	23"	12.5"	48"	17.5" - 19.5"	23"   33"	16"	51"	56 lbs.	65 lbs.	300 lbs.
	16"	25"	12.5"	50"	17.5" - 19.5"	23"   33"	16"	51"	58 lbs.	69 lbs.	300 lbs.
	18"	27"	12.5"	50"	17.5" - 19.5"	23"   33"	16"	51"	60 lbs.	70 lbs.	300 lbs.
	20"	28"	12.5"	50"	17.5" - 19.5"	23"   33"	16"	51"	61 lbs.	71 lbs.	300 lbs.
	22"	30"	12.5"	51"	17.5" - 19.5"	23"   33"	18"	51"	62 lbs.	72 lbs.	450 lbs.
Cruiser III	16"	24"	12"	35"	17.5" - 19.5"	16"	16" - 18"	42"	35 lbs.	43 lbs.	300 lbs.
	18"	26"	12"	35"	17.5" - 19.5"	16"	16" - 18"	42"	36 lbs.	43 lbs.	300 lbs.
	20"	28"	12"	35"	17.5" - 19.5"	16"	16" - 18"	42"	38 lbs.	43 lbs.	350 lbs.
Cirrus IV	16"	24"	12"	36"	17.5" - 19.5"	16" - 18"	16"	42"	32 lbs.	37 lbs.	300 lbs.
	18"	26"	12"	36"	17.5" - 19.5"	16" - 18"	16"	42"	34 lbs.	39 lbs.	300 lbs.
	20"	28"	12"	36"	17.5" - 19.5"	16" - 18"	16"	42"	36.2 lbs.	41.2 lbs.	300 lbs.
Viper	12"	20"	12"	32"	13.5" - 15.5"	16" - 18"	12"	36"	30 lbs.	35 lbs.	250 lbs.
	14"	22.5"	12"	32"	13.5" - 15.5"	16" - 18"	14"	36"	31 lbs.	36 lbs.	250 lbs.
	16"	22.5"	12"	36"	17.5" - 19.5"	16" - 18"	16"	42"	31.5 lbs.	37 lbs.	300 lbs.
	18"	24.5"	12"	36"	17.5" - 19.5"	16" - 18"	16"	42"	32 lbs.	39 lbs.	300 lbs.
	20"	28"	12"	36"	17.5" - 19.5"	16" - 18"	16"	42"	34 lbs.	39 lbs.	300 lbs.
Viper Plus GT	16"	24"	12.5"	36"	17.5" - 19.5"	17" - 19"	16" - 18"	42"	31 lbs.	36 lbs.	300 lbs.
	18"	26"	12.5"	36"	17.5" - 19.5"	17" - 19"	16" - 18"	42"	32 lbs.	37 lbs.	300 lbs.
	20"	28"	12.5"	36"	17.5" - 19.5"	17" - 19"	16" - 18"	42"	33 lbs.	38 lbs.	300 lbs.
	22"	30"	12.5"	36"	17.5" - 19.5"	17" - 19"	18"	42"	39.5 lbs.	44.5 lbs.	350 lbs.
Viper Plus Reclining	16"	24"	12.5"	50"	19.5"	23" - 33"	16"	42"	47 lbs.	53 lbs.	300 lbs.
	18"	26.5"	12.5"	50"	19.5"	23" - 33"	16"	42"	49 lbs.	55 lbs.	300 lbs.
	20"	28"	12.5"	50"	19.5"	23" - 33"	18"	42"	51 lbs.	57 lbs.	300 lbs.
Cougar	16"	24"	12"	37"	17.5" - 19.5"	18"	16"	44"	27 lbs.	32 lbs.	250 lbs.
	18"	26"	12"	37"	17.5" - 19.5"	18"	16"	44"	27 lbs.	32 lbs.	250 lbs.
Kanga	10"	18"	12"	15"	21"	15.5"	10 - 16"	37"	47 lbs.	53 lbs.	200 lbs.
	12"	20"	12"	15"	21"	15.5"	10 - 16"	37"	47 lbs.	53 lbs.	200 lbs.
	14"	22"	12"	15"	21"	15.5"	10 - 16"	37"	47 lbs.	53 lbs.	200 lbs.
	16"	24"	12"	18"	21"	17.5"	15 - 21"	42"	52 lbs.	59 lbs.	300 lbs.
	18"	26"	12"	18"	21"	18"	15 - 21"	42"	52 lbs.	59 lbs.	300 lbs.
	20"	28"	12"	18"	21"	18"	15 - 21"	42"	52 lbs.	59 lbs.	300 lbs.







**Rebel Wheelchair**  
Single Axle



Item #	Seat Width	Armrest	Product Front Riggings	UOM
RTLREB18DDA-SF	18"	Flip-Back Desk Arm	Swing-away Footrest	1/cs

- Quick-release rear wheels allow for easy storage or transport. (Figure A)
- Fold-down back and folding frame allows transport in almost any trunk. (Figure B)
- Easily removable swing-away footrests are also convenient for storage.
- Tool-free removable front casters.
- Desk-style armrests make transfers easy and accessibility better.
- Lightweight and extremely maneuverable, easy to navigate tight areas.
- Large accommodating seating surface.
- Carton size makes the Rebel perfect for retail.



#### specifications

Seat Width	18"	Overall Length (with riggings)	43"
Overall Width	25.5" (open)   10.5" (closed)	Weight	37 lbs.
Overall Height	35"	Carton Shipping Weight	42 lbs.
Seat-To-Floor Height	19.5"	Weight Limit	300 lbs.
Back Height	17"	Warranty	Limited Lifetime
Seat Dimensions	18" (W) x 16" (D)		

#### accessories

##### Seat Belts

STDS850	Seat Belts, Auto-Clasp Type Closure	1/ea
STDS851	Seat Belts, Velcro® Type Closure	1/ea
STDS855	Seat Belts, Auto-Clasp Type Closure, Bariatric	1/ea
STDS856	Seat Belts, Velcro® Type Closure, Bariatric	1/ea

##### Universal Oxygen "E" Cylinder Holder

STDS803	Universal Oxygen "E" Cylinder Holder	1/ea
STDS804	Universal Oxygen "E" Cylinder Holder with IV Pole Attachment	1/ea

##### Wheel Lock Extension

STDS801GT	Wheel Lock Extension	1/ea
-----------	----------------------	------

##### Anti-Fold Bar

STDS806	Anti-Fold Bar	1/ea
---------	---------------	------

##### Wheelchair Cane/Crutch Holder

STDS1034	Wheelchair Cane/Crutch Holder	1/ea
----------	-------------------------------	------

##### Heel Loops

STDS831	Heel Loops	1/pr
---------	------------	------

##### Cup Holder

STDS1040S	Universal Cup Holder	1/ea
-----------	----------------------	------

**Blue Streak Wheelchair**  
Single Axle



HCPCS  
**K0001**

**COMPETITIVE**  
**EDGE** Line



Item #	Seat Width	Armrest	Product Front Riggings	UOM
BLS18FBD-SF	18"	Flip-Back Desk Arm	Swing-away Footrests	1/cs
BLS18FBD-ELR	18"	Flip-Back Desk Arm	Swing-away, Elevating Leg rests	1/cs
BLS20FBD-SF	20"	Flip-Back Desk Arm	Swing-away Footrests	1/cs
BLS20FBD-ELR	20"	Flip-Back Desk Arm	Swing-away, Elevating Leg rests	1/cs

- Blue Powder-coated frame, black cross brace.
- Flip-back, padded desk-length arm.
- Nylon upholstery is durable, lightweight, attractive and easy to clean.
- Solid rubber tires mounted on composite wheels provide durability and low maintenance.
- Comes with push-to-lock wheel locks.
- Comes with calf strap.
- Comes with swing-away footrests or elevating leg rests.
- Weight Capacity: 250 lbs.

#### specifications

Width Open with 18" Seat	24"	Seat Dimensions with 18" Seat	18" (W) x 16" (D)
Width Open with 20 " Seat	26"	Seat Dimensions with 20" Seat	20" (W) x 16" (D)
Width Closed	12.5"	Length with Riggings	42"
Height	36"	Product Weight	41.25 lbs.
Seat-To-floor Height	19.5"	Carton Shipping Weight	47 lbs.
Back Height	16"	Warranty	Limited 3 Year
Weight Limit	250 lbs.		

#### accessories

##### Anti-Tippers

STDS833	Anti-Tippers With Wheels	1/pr
STDS833N	Anti-Tippers With Wheels	1/pr

##### Seat Belts

STDS850	Seat Belts, Auto-Clasp Type Closure	1/ea
STDS851	Seat Belts, Velcro® Type Closure	1/ea
STDS855	Seat Belts, Auto-Clasp Type Closure, Bariatric	1/ea
STDS856	Seat Belts, Velcro® Type Closure, Bariatric	1/ea

##### Wheel Lock Extension

STDS801GT	Wheel Lock Extension	1/ea
-----------	----------------------	------

##### Anti-Fold Bar

STDS806	Anti-Fold Bar	1/ea
---------	---------------	------

##### Wheelchair Cane/Crutch Holder

STDS1034	Wheelchair Cane/Crutch Holder	1/ea
----------	-------------------------------	------

##### Heel Loops

STDS831	Heel Loops	1/pr
---------	------------	------

##### Limb Support



WASR	Limb Support, Right	1/ea
WASL	Limb Support, Left	1/ea

## Silver Sport 1 Wheelchair

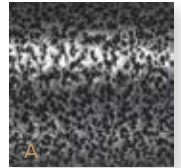
Single Axle



HCPCS  
K0001

Item #	Color	Seat Width	Armrest	Product Front Riggings	UOM
SSP118FA-SF	Silver Vein 	18"	Fixed Arm	Swing-away Footrests	1/cs
SSP118FA-ELR	Silver Vein 	18"	Fixed Arm	Swing-away Elevating Leg rests	1/cs

- Powder coated silver vein steel frame. (Figure A)
- Padded armrests.
- Nylon upholstery is durable, lightweight, attractive and easy to clean.
- Urethane tires mounted on composite wheels provide durability and low maintenance.
- Comes with push-to-lock wheel locks.
- Carry pocket on backrest provides additional convenience.
- Comes with swing-away footrests or elevating leg rests with tool-free adjustable length front riggings.
- Plastic foot plates.
- Weight Capacity: 300 lbs.



#### specifications

Overall Width (open)	24"	Overall Length (with riggings)	42"
Overall Width (closed)	12.5"	Weight	41 lbs.
Overall Height	36"	Carton Shipping Weight	48 lbs.
Seat-To-Floor Height	19.5"	Weight Limit	300 lbs.
Back Height	16"	Warranty	Limited 3 Year
Seat Dimensions	18" (W) x 16" (D)		

#### accessories

##### Anti-Tippers

STDS833N	Anti-Tippers With Wheels	1/pr
STDS818	-	1/pr

##### Seat Belts

STDS850	Seat Belts, Auto-Clasp Type Closure	1/ea
STDS851	Seat Belts, Velcro® Type Closure	1/ea
STDS855	Seat Belts, Auto-Clasp Type Closure, Bariatric	1/ea
STDS856	Seat Belts, Velcro® Type Closure, Bariatric	1/ea

##### Telescoping I.V. Pole Attachment

STDS820	Telescoping IV Pole Attachment	1/ea
---------	--------------------------------	------

##### Overhead Anti Theft Device

STDS823	Overhead Anti-Theft Device	1/ea
STDS821	Overhead Anti-Theft Device With IV Hooks	1/ea
STDS834	Overhead Anti-Theft Device Single Pole	1/ea

##### Wheel Lock Extension

STDS801GT	Wheel Lock Extension	1/ea
-----------	----------------------	------

##### Anti-Fold Bar

STDS806	Anti-Fold Bar	1/ea
---------	---------------	------

##### Wheelchair Cane/Crutch Holder

STDS1034	Wheelchair Cane/Crutch Holder	1/ea
----------	-------------------------------	------

##### Heel Loops

STDS831	Heel Loops	1/pr
---------	------------	------

##### Universal Forward Stabilizer

STDS862	Universal Forward Stabilizer	1/pr
---------	------------------------------	------

##### Limb Support

WASR	Limb Support, Right	1/ea
WASL	Limb Support, Left	1/ea

##### Chart Carry Pocket

STDS835	Chart Carry Pocket	1/ea
---------	--------------------	------

##### Universal Oxygen "E" Cylinder Holder

STDS803	Universal Oxygen "E" Cylinder Holder	1/ea
STDS804	Universal Oxygen "E" Cylinder Holder with IV Pole Attachment	1/ea



## Silver Sport 2 Wheelchair

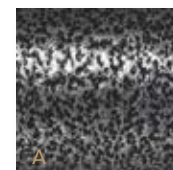
Dual axle



HCPCS  
K0001 / K0002

Item #	Color	Seat Width	Armrest	Product Front Riggings	UOM
SSP216FA-SF	Silver Vein	16"	Fixed Arm	Swing-away Footrests	1/cs
SSP216FA-ELR	Silver Vein	16"	Fixed Arm	Swing-away Elevating Leg rests	1/cs
SSP216DDA-SF	Silver Vein	16"	Detachable Desk Arm	Swing-away Footrests	1/cs
SSP216DDA-ELR	Silver Vein	16"	Detachable Desk Arm	Swing-away Elevating Leg rests	1/cs
SSP216DFA-SF	Silver Vein	16"	Detachable Full Arm	Swing-away Footrests	1/cs
SSP216DFA-ELR	Silver Vein	16"	Detachable Full Arm	Swing-away Elevating Leg rests	1/cs
SSP218FA-SF	Silver Vein	18"	Fixed Arm	Swing-away Footrests	1/cs
SSP218FA-ELR	Silver Vein	18"	Fixed Arm	Swing-away Elevating Leg rests	1/cs
SSP218DDA-SF	Silver Vein	18"	Detachable Desk Arm	Swing-away Footrests	1/cs
SSP218DDA-ELR	Silver Vein	18"	Detachable Desk Arm	Swing-away Elevating Leg rests	1/cs
SSP218DFA-SF	Silver Vein	18"	Detachable Full Arm	Swing-away Footrests	1/cs
SSP218DFA-ELR	Silver Vein	18"	Detachable Full Arm	Swing-away Elevating Leg rests	1/cs
SSP220DDA-SF	Silver Vein	20"	Detachable Desk Arm	Swing-away Footrests	1/cs
SSP220DDA-ELR	Silver Vein	20"	Detachable Desk Arm	Swing-away Elevating Leg rests	1/cs
SSP220DFA-SF	Silver Vein	20"	Detachable Full Arm	Swing-away Footrests	1/cs
SSP220DFA-ELR	Silver Vein	20"	Detachable Full Arm	Swing-away Elevating Leg rests	1/cs

- Powder-coated silver vein steel frame. (Figure A)
- Embossed vinyl upholstery is durable, lightweight, attractive and easy to clean.
- Urethane tires mounted on composite wheels provide durability and low maintenance.
- 8" front casters, adjustable in three positions.
- Padded armrests provide additional comfort.
- Carry pocket on backrest provides additional convenience.
- Comes with swing-away footrests or elevating leg rests with tool-free adjustable length riggings.
- Plastic foot plates with heel loops on footrests.
- Comes with push-to-lock wheel locks.



## specification

Width Open with 16" Seat	24"	Product Weight with 18" Seat	41 lbs.
Width Open with 18" Seat	26"	Product Weight with 20" Seat	42 lbs.
Width Open with 20" Seat	28"	Carton Shipping Weight with 16" Seat	48 lbs.
Width Closed	12.5"	Carton Shipping Weight with 18" Seat	49 lbs.
Height	36"	Carton Shipping Weight with 20" Seat	50 lbs.
Seat-To-Floor Height	17.5" - 19.5"	Weight Limit with 16" Seat	250 lbs.
Back Height	16"	Weight Limit with 18" Seat	300 lbs.
Seat Depth	16"	Weight Limit with 20" Seat	350 lbs.
Length with Riggings	42"	Warranty	Limited 3 Year
Product Weight with 16" Seat	40 lbs.		

## accessories

### Anti-Tippers

STDS833N	Anti-Tippers With Wheels	1/pr
STDS818	Anti-Tippers Without Wheels	1/pr

### Seat Belts

STDS850	Seat Belts, Auto-Clasp Type Closure	1/ea
STDS851	Seat Belts, Velcro® Type Closure	1/ea
STDS855	Seat Belts, Auto-Clasp Type Closure, Bariatric	1/ea
STDS856	Seat Belts, Velcro® Type Closure, Bariatric	1/ea

### Telescoping IV Pole Attachment

STDS820	Telescoping IV Pole Attachment	1/ea
---------	--------------------------------	------

### Universal Oxygen "E" Cylinder Holder

STDS803	Universal Oxygen "E" Cylinder Holder	1/ea
STDS804	Universal Oxygen "E" Cylinder Holder with IV Pole Attachment	1/ea

### Wheel Lock Extension

STDS801GT	Wheel Lock Extension	1/ea
-----------	----------------------	------

### Overhead Anti-Theft Device

STDS823	Overhead Anti-Theft Device	1/ea
STDS821	Overhead Anti-Theft Device With IV Hooks	1/ea

### Anti-Fold Bar

STDS806	Anti-Fold Bar	1/ea
---------	---------------	------

### Wheelchair Cane/Crutch Holder

STDS1034	Wheelchair Cane/Crutch Holder	1/ea
----------	-------------------------------	------

### Heel Loops

STDS831	Heel Loops	1/pr
---------	------------	------

### Limb Support

WASR	Limb Support, Right	1/ea
WASL	Limb Support, Left	1/ea

### Chart Carry Pocket

STDS836	Chart Carry Pocket	1/ea
---------	--------------------	------

### Universal Forward Stabilizer

STDS862	Universal Forward Stabilizer	1/pr
---------	------------------------------	------

## Chrome Sport Wheelchair

Dual axle



HCPCS

K0001 / K0002 / K0007





Item #	Seat Width	Armrest	Product Front Riggings	UOM
CS16FA-SF	16"	Fixed Arm	Swing-away Footrests	1/cs
CS16FA-ELR	16"	Fixed Arm	Swing-away Elevating Leg rests	1/cs
CS16DDA-SF	16"	Detachable Desk Arm	Swing-away Footrests	1/cs
CS16DDA-ELR	16"	Detachable Desk Arm	Swing-away Elevating Leg rests	1/cs
CS16DFA-SF	16"	Detachable Full Arm	Swing-away Footrests	1/cs
CS16DFA-ELR	16"	Detachable Full Arm	Swing-away Elevating Leg rests	1/cs
CS18FA-SF	18"	Fixed Arm	Swing-away Footrests	1/cs
CS18FA-ELR	18"	Fixed Arm	Swing-away Elevating Leg rests	1/cs
CS18DDA-SF	18"	Detachable Desk Arm	Swing-away Footrests	1/cs
CS18ADDA-SF	18"	Adjustable Height, Detachable Desk Arm	Swing-away Footrests	1/cs
CS18DDA-ELR	18"	Detachable Desk Arm	Swing-away Elevating Leg rests	1/cs
CS18ADDA-ELR	18"	Adjustable Height, Detachable Desk Arm	Swing-away Elevating Leg rests	1/cs
CS18DFA-SF	18"	Detachable Full Arm	Swing-away Footrests	1/cs
CS18ADFA-SF	18"	Adjustable Height, Detachable Full Arm	Swing-away Footrests	1/cs
CS18DFA-ELR	18"	Detachable Full Arm	Swing-away Elevating Leg rests	1/cs
CS18ADFA-ELR	18"	Adjustable Height, Detachable Full Arm	Swing-away Elevating Leg rests	1/cs
CS20DDA-SF	20"	Detachable Desk Arm	Swing-away Footrests	1/cs
CS20DDA-ELR	20"	Detachable Desk Arm	Swing-away Elevating Leg rests	1/cs
CS20DFA-SF	20"	Detachable Full Arm	Swing-away Footrests	1/cs
CS20DFA-ELR	20"	Detachable Full Arm	Swing-away Elevating Leg rests	1/cs

- Carbon steel frame with chrome coating provides an attractive, chip-proof, easy to maintain finish. (Figure A)
- Embossed vinyl upholstery is durable, lightweight, attractive and easy to clean.
- Urethane tires mounted on composite wheels provide durability and low maintenance.
- 8" front casters, adjustable in three positions.
- Padded armrests provide additional comfort.
- Carry pocket on backrest provides additional convenience.
- Comes with swing-away footrests or elevating leg rests with tool-free adjustable length riggings.
- Plastic foot plates.
- Comes with push-to-lock wheel locks.

## specifications

Width Open with 16" Seat	24"	Product Weight with 18" Seat	40 lbs.
Width Open with 18" Seat	26"	Product Weight with 20" Seat	41 lbs.
Width Open with 20" Seat	28"	Carton Shipping Weight with 16" Seat	45 lbs.
Width Closed	12.5"	Carton Shipping Weight with 18" Seat	46 lbs.
Height	36"	Carton Shipping Weight with 20" Seat	47 lbs.
Seat-To-Floor Height	17.5" - 19.5"	Weight Limit with 16" Seat	250 lbs.
Back Height	16"	Weight Limit with 18" Seat	300 lbs.
Seat Depth	16"	Weight Limit with 20" Seat	350 lbs.
Length with Riggings	42"	Warranty	Limited 3 Year
Product Weight with 16" Seat	39 lbs.		

## accessories

### Anti-Tippers

STDS833N	Anti-Tippers With Wheels	1/pr
STDS818	-	1/pr

### Wheel Lock Extensions

STDS801GT	Wheel Lock Extension	1/ea
-----------	----------------------	------

### Seat Belts

STDS850	Seat Belts, Auto-Clasp Type Closure	1/ea
STDS851	Seat Belts, Velcro® Type Closure	1/ea
STDS855	Seat Belts, Auto-Clasp Type Closure, Bariatric	1/ea
STDS856	Seat Belts, Velcro® Type Closure, Bariatric	1/ea

### Telescoping IV Pole Attachment

STDS820	Telescoping IV Pole Attachment	1/ea
---------	--------------------------------	------

### Universal Oxygen "E" Cylinder Holder with IV Pole

STDS803	Universal Oxygen "E" Cylinder Holder	1/ea
STDS804	Universal Oxygen "E" Cylinder Holder with IV Pole Attachment	1/ea

### Overhead Anti-Theft Device

STDS823	Overhead Anti-Theft Device	1/ea
STDS821	Overhead Anti-Theft Device With IV Hooks	1/ea
STDS834	Overhead Anti-Theft Device Single Pole	1/ea

### Anti-Fold Bar

STDS806	Anti-Fold Bar	1/ea
---------	---------------	------

### Wheelchair Cane/Crutch Holder

STDS1034	Wheelchair Cane/Crutch Holder	1/ea
----------	-------------------------------	------

### Heel Loops

STDS831	Heel Loops	1/pr
---------	------------	------

### Limb Support

WASR	Limb Support, Right	1/ea
WASL	Limb Support, Left	1/ea

### Chart Carry Pocket

STDS836	Chart Carry Pocket	1/ea
---------	--------------------	------

## Chrome Sport Full-Reclining Wheelchair

Single Axle



K0001/E1226

Item #	Seat Width	Armrest	Product Front Riggings	Color	UOM
CS16RBDDA	16"	Detachable Desk Arm	Swing-away Elevating Leg rests	Chrome	1/cs
CS16RBDFA	16"	Detachable Full Arm	Swing-away Elevating Leg rests	Chrome	1/cs
CS18RBDDA	18"	Detachable Desk Arm	Swing-away Elevating Leg rests	Chrome	1/cs
CS18RBDFA	18"	Detachable Full Arm	Swing-away Elevating Leg rests	Chrome	1/cs
CS20RBDDA	20"	Detachable Desk Arm	Swing-away Elevating Leg rests	Chrome	1/cs
CS20RBDFA	20"	Detachable Full Arm	Swing-away Elevating Leg rests	Chrome	1/cs

- Hydraulic reclining mechanism allows for infinite adjustments up to 180°.
- Arms have support extension for reclining position.
- Comfortable, lightweight, easy-to-clean vinyl upholstery.
- Attractive chrome frame.
- Dual axle position for the rear Mag-Style wheels.
- Lightweight, maintenance-free, Composite Mag-Style wheels.
- 8" front casters.
- Padded armrests provide added patient comfort.
- Wheels are positioned at the back of the frame for additional stability.
- Added rigidity bar keeps the back from hammocking.
- Precision sealed wheel bearings in front and rear ensure long-lasting performance and reliability.
- Rear anti-tippers standard.
- Headrest extension with cushioned head immobilizer standard.
- Comes standard with swing-away elevating leg rests.
- Metal foot plates.
- Comes with push-to-lock wheel locks.

#### specifications

Width Open with 16" Seat	24"	Product Weight with 18" Seat	57.63 lbs.
Width Open with 18" Seat	26"	Product Weight with 20" Seat	58.63 lbs.
Width Open with 20" Seat	28"	Carton Shipping Weight with 16" Seat	65.45 lbs.
Width Closed	12"	Carton Shipping Weight with 18" Seat	66.45 lbs.
Height	51"	Carton Shipping Weight with 20" Seat	67 lbs.
Seat-To-Floor Height	18" / 20"	Weight Limit with 16" Seat	300 lbs.
Back Height (without   with headrest)	22"   32"	Weight Limit with 18" Seat	300 lbs.
Seat Depth	17"	Weight Limit with 20" Seat	350 lbs.
Length with Riggings	49"	Warranty	Limited Lifetime
Product Weight with 16" Seat	56.63 lbs.		

#### accessories

<b>Anti-Tippers</b>				<b>Anti-Fold Bar</b>			
STDS4Y4712	Anti-Toppers Without Wheels	1/pr		STDS806	Anti-Fold Bar	1/ea	
<b>Seat Belts</b>				<b>Heel Loops</b>			
STDS850	Seat Belts, Auto-Clasp Type Closure	1/ea		STDS831	Heel Loops	1/pr	
STDS856	Seat Belts, Velcro® Type Closure, Bariatric	1/ea		<b>Wheelchair/Cane Crutch</b>			
STDS851	Seat Belts, Velcro® Type Closure	1/ea		STDS1034	Wheelchair Cane/Crutch Holder	1/ea	
STDS855	Seat Belts, Auto-Clasp Type Closure, Bariatric	1/ea					









## Silver Sport Full-Reclining Wheelchair

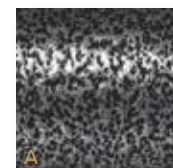
Single Axle



HCPCS  
K0001 / E1226

Item #	Seat Width	Armrest	Product Front Riggings	Color	UOM
SSP16RBDDA	16"	Detachable Desk Arm	Swing-away, Elevating Leg rests	Silver Vein 	1/cs
SSP16RBDFA	16"	Detachable Full Arm	Swing-away, Elevating Leg rests	Silver Vein 	1/cs
SSP18RBDDA	18"	Detachable Desk Arm	Swing-away, Elevating Leg rests	Silver Vein 	1/cs
SSP18RBDFA	18"	Detachable Full Arm	Swing-away, Elevating Leg rests	Silver Vein 	1/cs
SSP20RBDDA	20"	Detachable Desk Arm	Swing-away, Elevating Leg rests	Silver Vein 	1/cs
SSP20RBDFA	20"	Detachable Full Arm	Swing-away, Elevating Leg rests	Silver Vein 	1/cs

- Hydraulic reclining mechanism allows for infinite adjustments up to 180°.
- Arms have support extension for reclining position.
- Nylon upholstery is comfortable, lightweight and easy to clean.
- Carbon Steel frame with silver vein finish is attractive, and easy to maintain. (Figure A)
- Composite Mag-style wheels are lightweight and maintenance free.
- 8" front casters.
- Padded armrests provide added patient comfort.
- Wheels set back on frame prevents tipping.
- Precision sealed wheel bearings in front and rear ensure long lasting performance and reliability.
- Rear anti-tippers standard.
- Headrest extension with cushioned head immobilizer standard.
- Comes standard with swing-away elevating leg rests.
- Metal foot plates.
- Comes with push to lock wheel locks.



specifications			
Width Open with 16" Seat	23"	Product Weight with 18" Seat	60 lbs.
Width Open with 18" Seat	25"	Product Weight with 20" Seat	61 lbs.
Width Open with 20" Seat	28"	Carton Shipping Weight with 16" Seat	66 lbs.
Width Closed	12"	Carton Shipping Weight with 18" Seat	67 lbs.
Height	50"	Carton Shipping Weight with 20" Seat	67.5 lbs.
Seat-to-Floor Height	20.5"	Weight Limit with 16" Seat	300 lbs.
Back Height	21"   31"	Weight Limit with 18" Seat	300 lbs.
Seat Depth	16"	Weight Limit with 20" Seat	350 lbs.
Length with Riggings	50"	Warranty	Limited Lifetime
Product Weight with 16" Seat	59 lbs.		

accessories			
<b>Anti Tippers</b>			
STDS4Y4712	Without Wheels		1/pr
<b>Seat Belts</b>			
STDS850	Seat Belts, Auto-Clasp Type Closure		1/ea
STDS851	Seat Belts, Velcro® Type Closure		1/ea
STDS855	Seat Belts, Auto-Clasp Type Closure, Bariatric		1/ea
STDS856	Seat Belts, Velcro® Type Closure, Bariatric		1/ea
<b>Anti Fold Bar</b>			
STDS806	Anti-Fold Bar		1/ea
<b>Heel Loops</b>			
STDS831	Heel Loops		1/pr
<b>Wheelchair Cane/Crutch Holder</b>			
STDS1034	Wheelchair Cane/Crutch Holder		1/ea

## Bariatric Sentra EC Heavy-Duty Wheelchair

Dual Cross Brace



HCPCS  
**K0007**



Item #	Seat Width	Armrest	Product Front Riggings	UOM
STD20ECDDAHD-SF	20"	Detachable Desk Arm	Swing-away Footrests	1/cs
STD20ECDDAHD-ELR	20"	Detachable Desk Arm	Elevating Leg rests	1/cs
STD20ECDFAH-SF	20"	Detachable Full Arm	Swing-away Footrests	1/cs
STD20ECDFAH-ELR	20"	Detachable Full Arm	Elevating Leg rests	1/cs
STD22ECDDA-SF	22"	Detachable Desk Arm	Swing-away Footrests	1/cs
STD22ECDDA-ELR	22"	Detachable Desk Arm	Elevating Leg rests	1/cs
STD22ECDFAH-SF	22"	Detachable Full Arm	Swing-away Footrests	1/cs
STD22ECDFAH-ELR	22"	Detachable Full Arm	Elevating Leg rests	1/cs
STD24ECDDA-SF	24"	Detachable Desk Arm	Swing-away Footrests	1/cs
STD24ECDDA-ELR	24"	Detachable Desk Arm	Elevating Leg rests	1/cs
STD24ECDFAH-SF	24"	Detachable Full Arm	Swing-away Footrests	1/cs
STD24ECDFAH-ELR	24"	Detachable Full Arm	Elevating Leg rests	1/cs

- Weight Capacity: 450 lbs.
- Carbon Steel frame with triple-coated chrome for an attractive, chip-proof, maintainable finish.
- Double embossed vinyl upholstery is durable, lightweight, attractive and easy to clean.
- Standard dual axle provides easy transition of seat to hemi-level.
- Urethane tires mounted on composite wheels provide durability and low maintenance.
- Chrome hand rims standard.
- 8" front casters, adjustable in three positions.
- No maintenance, sealed, precision bearings.
- Padded armrests provide additional comfort.
- Comes with swing-away footrests or elevating leg rests with tool-free adjustable length riggings.
- Aluminum foot plates.
- Comes with push-to-lock wheel locks.

#### specifications

Width Open with 20" Seat	28"	Product Weight with 20" Seat	56 lbs.
Width Open with 22" Seat	30"	Product Weight with 22" Seat	57 lbs.
Width Open with 24" Seat	32"	Product Weight with 24" Seat	58 lbs.
Width Closed	12.5"	Carton Shipping Weight with 20" Seat	62 lbs.
Height	36"	Carton Shipping Weight with 22" Seat	63 lbs.
Seat-To-Floor Height	17.5" - 19.5"	Carton Shipping Weight with 24" Seat	64 lbs.
Back Height (20"   22" and 24" )	16"   18"	Weight Limit	450 lbs.
Seat Depth	18"	Warranty	Limited 3 Year
Length with Riggings	42"		

#### accessories

##### Telescoping IV Pole Attachment

STDS820	Telescoping IV Pole Attachment	1/ea
---------	--------------------------------	------

##### Amputee Adapter

STDS827	Amputee Adapter	1/pr
---------	-----------------	------

##### Universal Forward Stabilizer

STDS862	Universal Forward Stabilizer	1/pr
---------	------------------------------	------

##### Anti-Tippers

STDS818	Anti-Tippers without Wheels	1/pr
---------	-----------------------------	------

##### Wheel Lock Extension

STDS801	Wheel Lock Extension	1/ea
---------	----------------------	------

##### Seat Belts

STDS850	Seat Belts, Auto-Clasp Type Closure	1/ea
STDS851	Seat Belts, Velcro® Type Closure	1/ea
STDS855	Seat Belts, Auto-Clasp Type Closure, Bariatric	1/ea
STDS856	Seat Belts, Velcro® Type Closure, Bariatric	1/ea

##### Universal Oxygen "E" Cylinder Holder

STDS803	Universal Oxygen "E" Cylinder Holder	1/ea
STDS804	Universal Oxygen "E" Cylinder Holder with IV Pole Attachment	1/ea

##### Overhead Anti-Theft Device

STDS823	Overhead Anti-Theft Device	1/ea
STDS821	Overhead Anti-Theft Device With IV Hooks	1/ea
STDS834	Overhead Anti-Theft Device Single Pole	1/ea

##### Anti-Fold Bar

STDS806	Anti-Fold Bar	20" and 22" Only	1/ea
---------	---------------	------------------	------

##### Wheelchair Cane/Crutch Holder

STDS1034	Wheelchair Cane/Crutch Holder	1/ea
----------	-------------------------------	------

##### Heel Loops

STDS831	Heel Loops	1/pr
---------	------------	------

##### Limb Support

WASR	Limb Support, Right	1/ea
WASL	Limb Support, Left	1/ea

##### Chart Carry Pocket

STDS836	Chart Carry Pocket	20" Wheelchairs	1/ea
---------	--------------------	-----------------	------

**Bariatric Sentra Extra-Heavy-Duty Wheelchair**

Dual Cross Brace

HCPCS  
**K0007**

- Weight Capacity: 500 lbs.
- Carbon steel frame with triple-coated chrome for an attractive, chip-proof, maintainable finish.
- Reinforced steel gussets at all weight bearing points provide additional strength.
- Durable, heavy-gauge reinforced naugahyde upholstery.
- Comes standard with carry pocket on backrest.
- Reinforced side frame, caster journals and dual cross bars.
- Dual-position front fork.
- Dual-position front frame.
- Composite Mag-style wheels with chrome hand rim are lightweight and maintenance free.
- Hemi-adjustable caster is optional (Part #STDS1074).
- Precision sealed wheel bearings in front and rear ensure long-lasting performance and reliability.
- Padded armrests provide added patient comfort.
- Comes with swing-away footrests or elevating leg rests with tool-free adjustable length riggings.
- Comes with push-to-lock wheel locks.

Item #	Seat Width	Armrest	Product Front Riggings	UOM
STD20DDA-SF	20"	Detachable Desk Arm	Swing-away Footrests	1/cs
STD20DDA-ELR	20"	Detachable Desk Arm	Swing-away, Elevating Leg rests	1/cs
STD20DFA-SF	20"	Detachable Full Arm	Swing-away Footrests	1/cs
STD20DFA-ELR	20"	Detachable Full Arm	Swing-away, Elevating Leg rests	1/cs
STD20ADDA-SF	20"	Detachable and Adjustable Height Desk Arm	Swing-away Footrests	1/cs
STD20ADDA-ELR	20"	Detachable and Adjustable Height Desk Arm	Swing-away, Elevating Leg rests	1/cs
STD20ADFA-SF	20"	Detachable and Adjustable Height Full Arm	Swing-away Footrests	1/cs
STD20ADFA-ELR	20"	Detachable and Adjustable Height Full Arm	Swing-away, Elevating Leg rests	1/cs
STD22DDA-SF	22"	Detachable Desk Arm	Swing-away Footrests	1/cs
STD22DDA-ELR	22"	Detachable Desk Arm	Swing-away, Elevating Leg rests	1/cs
STD22DFA-SF	22"	Detachable Full Arm	Swing-away Footrests	1/cs
STD22DFA-ELR	22"	Detachable Full Arm	Swing-away, Elevating Leg rests	1/cs
STD22ADDA-SF	22"	Detachable and Adjustable Height Desk Arm	Swing-away Footrests	1/cs
STD22ADDA-ELR	22"	Detachable and Adjustable Height Desk Arm	Swing-away, Elevating Leg rests	1/cs
STD22ADFA-SF	22"	Detachable and Adjustable Height Full Arm	Swing-away Footrests	1/cs
STD22ADFA-ELR	22"	Detachable and Adjustable Height Full Arm	Swing-away, Elevating Leg rests	1/cs
STD24DDA-SF	24"	Detachable Desk Arm	Swing-away Footrests	1/cs
STD24DDA-ELR	24"	Detachable Desk Arm	Swing-away, Elevating Leg rests	1/cs
STD24DFA-SF	24"	Detachable Full Arm	Swing-away Footrest	1/cs
STD24DFA-ELR	24"	Detachable Full Arm	Swing-away, Elevating Leg rests	1/cs
STD24ADDA-SF	24"	Detachable and Adjustable Height Desk Arm	Swing-away Footrests	1/cs
STD24ADDA-ELR	24"	Detachable and Adjustable Height Desk Arm	Swing-away, Elevating Leg rests	1/cs
STD24ADFA-SF	24"	Detachable and Adjustable Height Full Arm	Swing-away Footrests	1/cs
STD24ADFA-ELR	24"	Detachable and Adjustable Height Full Arm	Swing-away, Elevating Leg rests	1/cs

## specifications

Width Open with 20" Seat	29"	Product Weight with 20" Seat	54 lbs.
Width Open with 22" Seat	31"	Product Weight with 22" Seat	56 lbs.
Width Open with 24" Seat	32.5"	Product Weight with 24" Seat	66.25 lbs.
Width Closed	13"	Carton Shipping Weight with 20" Seat	60 lbs.
Height	37"	Carton Shipping Weight with 22" Seat	62 lbs.
Seat-To-Floor Height	17.5" - 19.5"	Carton Shipping Weight with 24" Seat	72 lbs.
Back Height	18"	Weight Limit	500 lbs.
Seat Depth	18"	Warranty	Limited Lifetime
Length with Riggings	42"		

## accessories

### Telescoping IV Pole Attachment

STDS820	Telescoping IV Pole Attachment	1/ea
---------	--------------------------------	------

### Amputee Adapter

STDS827	Amputee Adapter	1/pr
---------	-----------------	------

### Universal Forward Stabilizer

STDS860	Universal Forward Stabilizer	1/pr
STDS862	Universal Forward Stabilizer	1/pr

### Anti-Tippers With Wheels

STDS802	Anti-Tippers With Wheels	1/pr
---------	--------------------------	------

### Wheel Lock Extension

STDS801	Wheel Lock Extension	1/ea
---------	----------------------	------

### Seat Rail Extension

STDS2420	Seat Rail Extension Kit, 24" models only	1/pr
STDS811	Seat Rail Extensions	1/pr

### Bariatric Seat Belts

STDS855	Seat Belts, Auto-Clasp Type Closure, Bariatric	1/ea
STDS856	Seat Belts, Velcro® Type Closure, Bariatric	1/ea

### Universal Oxygen "E" Cylinder Holder

STDS803	Universal Oxygen "E" Cylinder Holder	1/ea
STDS804	Universal Oxygen "E" Cylinder Holder with IV Pole Attachment	1/ea

### Overhead Anti-Theft Device

STDS823	Overhead Anti-Theft Device	1/ea
STDS821	Overhead Anti-Theft Device With IV Hooks	1/ea
STDS834	Overhead Anti-Theft Device Single Pole	1/ea

### Anti-Fold Device

STDS806	Anti-Fold Bar	20" and 22" Only	1/ea
---------	---------------	------------------	------

### Wheelchair Cane/Crutch Holder

STDS1034	Wheelchair Cane/Crutch Holder	1/ea
----------	-------------------------------	------

### Heel Loops

STDS831	Heel Loops	1/pr
---------	------------	------

### Limb Support

WASR	Limb Support, Right	1/ea
WASL	Limb Support, Left	1/ea

### Chart Carry Pocket

STDS836	Chart Carry Pocket	20" Wheelchairs	1/ea
---------	--------------------	-----------------	------



## Bariatric Sentra EC Heavy-Duty, Extra-Extra-Wide Wheelchair

Dual Cross Brace



HCPCS  
**K0007**



Shown with  
optional PH-SF  
swing-away footrests

Item #	Seat Width	Armrest	Product Front Riggings	UOM
STD26ECDDA	26"	Detachable Desk Arm	Sold Separately	1/cs
STD26ECDFA	26"	Detachable Full Arm	Sold Separately	1/cs
STD28ECDDA	28"	Detachable Desk Arm	Sold Separately	1/cs
STD28ECDFA	28"	Detachable Full Arm	Sold Separately	1/cs
STD30ECDDA	30"	Detachable Desk Arm	Sold Separately	1/cs
STD30ECDFA	30"	Detachable Full Arm	Sold Separately	1/cs

- 700 lb. Weight Capacity.
- Carbon steel frame with triple-coated chrome for an attractive, chip-proof, maintainable finish.
- Reinforced steel gussets at all weight bearing points provide additional strength.
- Durable reinforced nylon upholstery.
- Steel, spoke wheels are strong and maintenance free.
- Heavy-duty, flat-free 8" front casters are adjustable in two positions.
- Extra-heavy-duty front forks.
- Reinforced side frame, caster journals and dual cross bars.
- Precision sealed wheel bearings in front and rear ensure long-lasting performance and reliability.
- Extra-large, padded armrests provide comfort and support.
- Riggings have extra-large, heavy-duty, aluminum foot plates that provide maximum support, are attractive and crack proof. (Must be ordered separately)
- Comes with push-to-lock wheel locks.

#### specifications

Width Open   Closed with 26" Seat	34.5"   14"	Product Weight with 20" Seat	62 lbs.
Width Open   Closed with 28" Seat	37"   14.5"	Product Weight with 22" Seat	64 lbs.
Width Open   Closed with 30" Seat	39"   15"	Product Weight with 24" Seat	66 lbs.
Height	35"	Carton Shipping Weight with 20" Seat	68 lbs.
Seat-To-Floor Height	19.5"	Carton Shipping Weight with 22" Seat	70 lbs.
Back Height	18"	Carton Shipping Weight with 24" Seat	72 lbs.
Seat Depth	20"	Weight Limit	700 lbs.
Length with Riggings	43"	Warranty	Limited Lifetime

#### accessories

<b>Front Riggings</b>		<b>Telescoping IV Pole Attachment</b>	
PH-SF	Aluminum Foot plate	1/pr	
PHELR	Aluminum Foot plate	1/pr	
<b>Anti-Tippers with Wheels</b>		<b>Universal Oxygen "E" Cylinder Holder</b>	
STDS829	Anti-Tippers With Wheels	1/pr	
<b>Wheel Lock Extension</b>		<b>Wheelchair Cane/Crutch Holder</b>	
STDS801	Wheel Lock Extension	1/ea	
<b>Bariatric Seat Belts</b>		<b>Heel Loops</b>	
STDS855	Seat Belts, Auto-Clasp Type Closure, Bariatric	1/ea	
STDS856	Seat Belts, Velcro® Type Closure, Bariatric	1/ea	
		STDS831	Heel Loops
			1/pr

## Bariatric Deluxe Sentra Heavy-Duty, Extra-Extra-Wide Wheelchair

Dual Axle



HCPCS  
**K0007**

Shown with swing-away,  
elevating leg rests.  
(HDELR sold separately)

Item #	Seat Width	Armrest	Product Front Riggings	UOM
STD26DDA	26"	Detachable Desk Arm	Riggings Sold Separately	1/cs
STD26DFA	26"	Detachable Full Arm	Riggings Sold Separately	1/cs
STD28DDA	28"	Detachable Desk Arm	Riggings Sold Separately	1/cs
STD28DFA	28"	Detachable Full Arm	Riggings Sold Separately	1/cs
STD30DDA	30"	Detachable Desk Arm	Riggings Sold Separately	1/cs
STD30DFA	30"	Detachable Full Arm	Riggings Sold Separately	1/cs

- 700 lb. Weight Capacity.
- Powder-coated silver vein frame.
- Reinforced steel gussets at all weight bearing points provide additional strength.
- Durable reinforced nylon upholstery.
- Steel, Mag-style wheels are strong and maintenance free.
- Heavy-duty, flat-free 8" front casters are adjustable in two positions.
- Extra-heavy-duty front forks.
- Dual axle provides easy transition of seat to hemi-level.
- Reinforced side frame, caster journals and dual cross bars.
- Precision sealed wheel bearings in front and rear ensure long-lasting performance and reliability.
- Extra-large, contoured plastic armrests provide comfort and support.
- Riggings have extra-large, heavy-duty, aluminum tapered foot plates that provide maximum support, are attractive and crack proof. (Must be ordered separately)
- Footrests are tapered for comfort.
- Comes with push-to-lock wheel locks.

#### specifications

Width Open with 26" Seat	35"	Product Weight with 20" Seat	87 lbs.
Width Open with 28" Seat	37"	Product Weight with 22" Seat	88 lbs.
Width Open with 30" Seat	39"	Product Weight with 24" Seat	89 lbs.
Width Closed	14.5"	Carton Shipping Weight with 20" Seat	95 lbs.
Height	38"	Carton Shipping Weight with 22" Seat	98 lbs.
Seat-To-Floor Height	17" - 19"	Carton Shipping Weight with 24" Seat	99 lbs.
Back Height	16"	Weight Limit	700 lbs.
Seat Depth	20"	Warranty	Limited Lifetime
Length with Riggings	47"		

#### accessories

<b>Front Riggings</b>			<b>Wheelchair Cane/Crutch Holder</b>		
HDSF	Aluminum Foot plate	1/pr	STDS1034	Wheelchair Cane/Crutch Holder	1/ea
HDELR	Swing-away Elevating Leg rests, Padded Calf Pads, Large Foot plates	1/pr	<b>Heel Loops</b>		
			STDS831	Heel Loops	1/pr
<b>Anti-tippers with wheels</b>			<b>Wheel Lock Extension</b>		
STDS829	Anti-Tippers With Wheels	1/pr	STDS801	Wheel Lock Extension	1/ea
<b>Bariatric seat belts</b>			<b>Universal Oxygen “E” Cylinder Holder</b>		
STDS855	Seat Belts, Auto-Clasp Type Closure, Bariatric	1/ea	STDS803	Universal Oxygen “E” Cylinder Holder	1/ea
STDS856	Seat Belts, Velcro® Type Closure, Bariatric	1/ea			



## Deluxe Sentra Full-Reclining Wheelchair



HCPCS  
K0001 / E1226

**Comes standard  
with swing-away,  
elevating legrests.**

- Hydraulic reclining mechanism allows for infinite adjustments up to 180°.
- Durable, heavy-gauge naugahyde upholstery.
- Carbon Steel frame with triple-coated chrome for an attractive, chip-proof, maintainable finish.
- Composite Mag-style wheels with chrome hand rims are lightweight and maintenance free.
- 8" front casters.
- Padded armrests provide added patient comfort.
- Wheels set back on frame prevent tipping.
- Precision sealed wheel bearings in front and rear ensure long-lasting performance and reliability.
- Rear anti-tippers standard.
- Comes standard with swing-away elevating legrests.
- Aluminum foot plates are attractive, crack-proof and lightweight.
- Front caster forks are adjustable in three positions.
- Carry pocket standard.
- Headrest extension with cushioned head immobilizer standard.
- Comes with push-to-lock wheel locks.

Item #	Seat Width	Armrest	Product Front Riggings	UOM
STD14RBDDA	14"	Detachable Desk Arm	Swing-away Elevating Leg rests	1/cs
STD16RBDDA	16"	Detachable Desk Arm	Swing-away Elevating Leg rests	1/cs
STD16RBDFA	16"	Detachable Full Arm	Swing-away Elevating Leg rests	1/cs
STD16RBADDA	16"	Detachable and Adj. Height Desk Arm	Swing-away Elevating Leg rests	1/cs
STD16RBADFA	16"	Detachable and Adj. Height Full Arm	Swing-away Elevating Leg rests	1/cs
STD18RBDDA	18"	Detachable Desk Arm	Swing-away Elevating Leg rests	1/cs
STD18RBDFA	18"	Detachable Full Arm	Swing-away Elevating Leg rests	1/cs
STD18RBADDA	18"	Detachable and Adj. Height Desk Arm	Swing-away Elevating Leg rests	1/cs
STD18RBADFA	18"	Detachable and Adj. Height Full Arm	Swing-away Elevating Leg rests	1/cs
STD20RBDDA	20"	Detachable Desk Arm	Swing-away Elevating Leg rests	1/cs
STD20RBDFA	20"	Detachable Full Arm	Swing-away Elevating Leg rests	1/cs
STD20RBADDA	20"	Detachable and Adj. Height Desk Arm	Swing-away Elevating Leg rests	1/cs
STD20RBADFA	20"	Detachable and Adj. Height Full Arm	Swing-away Elevating Leg rests	1/cs
STD22RBDDA	22"	Detachable Desk Arm	Swing-away Elevating Leg rests	1/cs

### specifications

Width Open with 14" Seat	23"	Length with Riggings	51"
Width Open with 16" Seat	25"	Product Weight with 14" Seat	56 lbs.
Width Open with 18" Seat	27"	Product Weight with 16" Seat	59 lbs.
Width Open with 20" Seat	28"	Product Weight with 18" Seat	60 lbs.
Width Open with 22" Seat	30"	Product Weight with 20" Seat	61 lbs.
Width Closed (with 14", 16", 18" 20", 22" seat)	12.5"	Product Weight with 22" Seat	62 lbs.
Height with 14" Seat	48"	Carton Shipping Weight with 14" Seat	65 lbs.
Height with 16" Seat	50"	Carton Shipping Weight with 16" Seat	69 lbs.
Height with 18" Seat	50"	Carton Shipping Weight with 18" Seat	70 lbs.
Height with 20" Seat	50"	Carton Shipping Weight with 20" Seat	71 lbs.
Height with 22" Seat	51"	Carton Shipping Weight with 22" Seat	72 lbs.
Seat-To-Floor Height	17.5" - 19.5"	Weight Limit with 14", 16", 18" and 20" Seat	300 lbs.
Back Height	23"   33"	Weight Limit with 22" Seat	450 lbs.
Seat Depth (with 14", 16", 18", 20" seat)	16"	Warranty	Limited Lifetime
Seat Depth (with 22" seat)	18"		

### accessories

#### Universal Forward Stabilizer

STDS860	Universal Forward Stabilizer	1/pr
---------	------------------------------	------

#### Anti-Tippers

STDS802	Anti-Tippers With Wheels	1/pr
STDS818	-	1/pr

#### Universal O2 Cylinder Holder

STDS6008-1	Oxygen Cylinder Carry Bag for Wheelchair	1/ea
------------	--	------

#### Seat Belts

STDS850	Seat Belts, Auto-Clasp Type Closure	1/ea
STDS851	Seat Belts, Velcro® Type Closure	1/ea
STDS855	Seat Belts, Auto-Clasp Type Closure, Bariatric	1/ea

#### Oblique Projection Handrim

STDS1022	Oblique Projection Handrim	1/ea
----------	----------------------------	------

#### Standard 8" Caster

STDS1002	Standard 8" Caster	1/ea
----------	--------------------	------

#### Heel Loops

STDS831	Heel Loops	1/pr
---------	------------	------

#### Chart Carry Pocket

STDS835	16", 18" and 20" Wheelchairs w/ Nylon Upholstery	1/ea
---------	--	------

#### Limb Support

WASR	Limb Support, Right	1/ea
WASL	Limb Support, Left	1/ea

#### Flat-Free Wheel With Handrims

STDS840	Flat-free Wheel With Handrims	1/ea
---------	-------------------------------	------

#### Light Weight 24" Wheel

STDS1001	Standard 24" Wheel	1/ea
----------	--------------------	------

#### 6" Wheel Lock Extension

STDS801	Wheel Lock Extension	1/ea
---------	----------------------	------

#### Seat Rail Extension

STDS1818V	Seat Rail Extension Kit	1/pr
STDS811	Seat Rail Extensions	1/pr

#### Overhead Anti-Theft Device

STDS823	Overhead Anti-Theft Device	1/ea
STDS821	Overhead Anti-Theft Device With IV Hooks	1/ea
STDS834	Overhead Anti-Theft Device Single Pole	1/ea

#### Anti-Fold Bar

STDS806	Anti-Fold Bar	1/ea
---------	---------------	------

#### Wheelchair Cane/Crutch Holder

STDS1034	Wheelchair Cane/Crutch Holder	1/ea
----------	-------------------------------	------

## Cruiser III Wheelchair

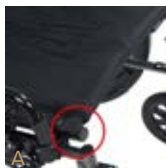
Lightweight, Dual-Axle Wheelchair



HCPCS  
**K0003**

All the features of the original  
Cruiser III and the New Built-in  
Seat Rail System and  
Extendable Upholstery

**STEP 1**



**STEP 2**



**STEP 3**



Item #	Seat Width	Product Overall Width Open	Armrest	Product Front Riggings	UOM
K316DDA-SF	16"	24"	Flip-Back Detachable Desk Arm	Swing-away Footrest	1/cs
K316DDA-ELR	16"	24"	Flip-Back Detachable Desk Arm	Elevating Leg rest	1/cs
K316DFA-SF	16"	24"	Flip-Back Detachable Full Arm	Swing-away Footrest	1/cs
K316DFA-ELR	16"	24"	Flip-Back Detachable Full Arm	Elevating Leg rest	1/cs
K316ADDA-SF	16"	24"	Flip-Back Detachable and Adjustable Height Desk Arm	Swing-away Footrest	1/cs
K316ADDA-ELR	16"	24"	Flip-Back Detachable and Adjustable Height Desk Arm	Elevating Leg rest	1/cs
K318DDA-SF	18"	26"	Flip-Back Detachable Desk Arm	Swing-away Footrest	1/cs
K318DDA-ELR	18"	26"	Flip-Back Detachable Desk Arm	Elevating Leg rest	1/cs
K318DFA-SF	18"	26"	Flip-Back Detachable Full Arm	Swing-away Footrest	1/cs
K318DFA-ELR	18"	26"	Flip-Back Detachable Full Arm	Elevating Leg rest	1/cs
K318ADDA-SF	18"	26"	Flip-Back Detachable and Adjustable Height Desk Arm	Swing-away Footrest	1/cs
K318ADDA-ELR	18"	26"	Flip-Back Detachable and Adjustable Height Desk Arm	Elevating Leg rest	1/cs
K320DDA-SF	20"	28"	Flip-Back Detachable Desk Arm	Swing-away Footrest	1/cs
K320DDA-ELR	20"	28"	Flip-Back Detachable Desk Arm	Elevating Leg rest	1/cs
K320DFA-SF	20"	28"	Flip-Back Detachable Full Arm	Swing-away Footrest	1/cs
K320DFA-ELR	20"	28"	Flip-Back Detachable Full Arm	Elevating Leg rest	1/cs
K320ADDA-SF	20"	28"	Flip-Back Detachable and Adjustable Height Desk Arm	Swing-away Footrest	1/cs
K320ADDA-ELR	20"	28"	Flip-Back Detachable and Adjustable Height Desk Arm	Elevating Leg rest	1/cs

- Built-in seat rail extensions and extendable upholstery easily adjust seat depth from 16" to 18", (patent pending)
- (Figure A - C)
- Weights under 36 lbs. (excluding front riggings).
- Carbon steel frame with silver vein finish.
- Removable flip-back arms allow for easy transfer. (Figure D)
- New frame style eliminates seat guides and allows for custom back inserts and accessories.
- Nylon upholstery is durable, lightweight, attractive and easy to clean.
- Composite, Mag-style wheels are lightweight and maintenance free.
- 8" front casters are adjustable in three positions.
- Padded armrests provide additional comfort.
- Comes with swing-away footrests or elevating leg rests with tool-free adjustable length riggings. (Figure E)
- Precision sealed wheel bearings in front and rear ensure long-lasting performance and reliability.
- Dual axle provides easy transition of seat height to hemi-level.
- Comes with push-to-lock wheel locks.

#### specifications

Width Closed	12"	Product Weight (with 16" Seat)	35 lbs.
Height	35"	Product Weight (with 18" Seat)	36 lbs.
Seat--To-Floor Height	17.5" - 19.5"	Product Weight (with 20" Seat)	38 lbs.
Back Height	16"	Weight Limit (with 16" and 18" Seat)	300 lbs.
Seat Depth	16" - 18"	Weight Limit (with 20" seat)	350 lbs.
Length with Riggings	42"	Carton Shipping Weight	43 lbs. or less
		Warranty	Limited Lifetime

#### accessories

##### Universal Forward Stabilizer

STDS860	Universal Forward Stabilizer	1/pr
---------	------------------------------	------

##### Anti-Tippers

STDS819	Anti-Tippers With wheels	1/pr
---------	--------------------------	------

##### Seat Belts

STDS850	Seat Belts, Auto-Clasp Type Closure	1/ea
STDS851	Seat Belts, Velcro® Type Closure	1/ea
STDS855	Seat Belts, Auto-Clasp Type Closure, Bariatric	1/ea
STDS856	Seat Belts, Velcro® Type Closure, Bariatric	1/ea

##### Telescoping I.V. Pole Attachment

STDS820	Telescoping IV Pole Attachment	1/ea
---------	--------------------------------	------

##### Universal Oxygen "E" Cylinder Holder

STDS803	Universal Oxygen "E" Cylinder Holder	1/ea
STDS804	Universal Oxygen "E" Cylinder Holder with IV Pole Attachment	1/ea

##### 8" Caster

STDS1002	Standard 8" Caster	1/ea
----------	--------------------	------

##### 6" Wheel Lock Extension

STDS801GT	Wheel Lock Extension	1/ea
-----------	----------------------	------

##### Overhead Anti Theft Device

STDS823	Overhead Anti-Theft Device	1/ea
STDS821	Overhead Anti-Theft Device With IV Hooks	1/ea
STDS834	Overhead Anti-Theft Device Single Pole	1/ea

##### Anti-Fold Bar

STDS806	Anti-Fold Bar	1/ea
---------	---------------	------

##### Wheelchair Cane/Crutch Holder

STDS1034	Wheelchair Cane/Crutch Holder	1/ea
----------	-------------------------------	------

##### Heel Loops

STDS831	Heel Loops	1/pr
---------	------------	------

##### Limb Support

WASR	Limb Support, Right	1/ea
------	---------------------	------

##### Chart Carry Pocket

STDS835	16", 18" and 20" Wheelchairs w/ Nylon Upholstery	1/ea
---------	--	------



## Cirrus IV Wheelchair

High Strength, Lightweight Dual-Axle



HCPCS  
**K0004**



Item #	Seat Width	Color	Product Armrest/Back	Product Front Riggings	UOM
C416ADDASV-SF	16"	Silver Vein	Flip-back Adjustable Height Desk Arm and Back	Swing-away Footrests	1/cs
C416ADDASV-ELR	16"	Silver Vein	Flip-back Adjustable Height Desk Arm and Back	Swing-away, Elevating Leg rests	1/cs
C416ADFASV-SF	16"	Silver Vein	Flip-back Adjustable Height Full Arm and Back	Swing-away Footrests	1/cs
C416ADFASV-ELR	16"	Silver Vein	Flip-back Adjustable Height Full Arm and Back	Swing-away, Elevating Legrests	1/cs
C418ADDASV-SF	18"	Silver Vein	Flip-back Adjustable Height Desk Arm and Back	Swing-away Footrests	1/cs
C418ADDASV-ELR	18"	Silver Vein	Flip-back Adjustable Height Desk Arm and Back	Swing-away, Elevating Legrests	1/cs
C418ADFASV-SF	18"	Silver Vein	Flip-back Adjustable Height Full Arm and Back	Swing-away Footrests	1/cs
C418ADFASV-ELR	18"	Silver Vein	Flip-back Adjustable Height Full Arm and Back	Swing-away, Elevating Legrests	1/cs
C420ADDASV-SF	20"	Silver Vein	Flip-back Adjustable Height Desk Arm and Back	Swing-away Footrests	1/cs
C420ADDASV-ELR	20"	Silver Vein	Flip-back Adjustable Height Desk Arm and Back	Swing-away, Elevating Legrests	1/cs
C420ADFASV-SF	20"	Silver Vein	Flip-back Adjustable Height Full Arm and Back	Swing-away Footrests	1/cs
C420ADFASV-ELR	20"	Silver Vein	Flip-back Adjustable Height Full Arm and Back	Swing-away, Elevating Legrests	1/cs

- Weighs only 32 lbs. (Excluding front rigging).
  - Ideal combination of quality, lightweight and economy.
  - Flip-back arm is height adjustable from top of seat rail 10" to 14". (Figure A - B)
  - Flip-back arm features an easy-to-use push release mechanism. (Figure C)
  - Tool-free height-adjustable back. (Figure D)
  - Carbon steel and aluminum frame with combination powder coated and silver vein finish is attractive, chip resistant and easy to maintain.
  - Durable, flame-retardant nylon upholstery resists mildew and bacteria.
  - Composite Mag-style wheels with composite hand rims are lightweight and maintenance free.
  - Polyurethane rear tires and composite casters
- offer superior performance, smoother ride and are lightweight.
  - 8" Front casters have three height adjustments.
  - Padded armrests provide added patient comfort.
  - Dual over-center cross links provide added rigidity.
  - Comes with swing-away footrests or elevating leg rests with tool-free adjustable length riggings.
  - Composite foot plates with heel loops are durable and lightweight.
  - Precision sealed wheel bearings in front and rear ensure long-lasting and reliability.
  - Dual axle provides easy transition of seat height to hemi level.
  - Comes with push-to-lock wheel locks.

## specifications

Width Open with 16" Seat	24"	Product Weight with 16" Seat	32 lbs.
Width Open with 18" Seat	26"	Product Weight with 18" Seat	34 lbs.
Width Open with 20" Seat	28"	Product Weight with 20" Seat	36.25 lbs.
Width Closed	12"	Carton Shipping Weight with 16" Seat	37 lbs.
Height	36"	Carton Shipping Weight with 18" Seat	39 lbs.
Seat-To-Floor Height	17.5" - 19.5"	Carton Shipping Weight with 20" Seat	41.25 lbs.
Back Height	16" - 18"	Weight Limit	300 lbs.
Seat Depth	16"	Warranty	Limited Lifetime
Length with Riggings	42"		

## accessories

<b>Replacement Front Riggings</b>			
STDS3J24SF	Plastic Footplate	1/pr	
LK3JELR	Plastic Footplate	1/pr	
<b>Amputee Adapter</b>			
STDS826	Amputee Adapter	1/pr	
<b>Universal Forward Stabilizers</b>			
STDS860	Universal Forward Stabilizer	1/pr	
<b>Anti-Tippers With Wheels</b>			
STDS838	Anti-Tipper With Wheels	1/pr	
<b>Seat Belts</b>			
STDS850	Seat Belts, Auto-Clasp Type Closure	1/ea	
STDS851	Seat Belts, Velcro® Type Closure	1/ea	
STDS855	Seat Belts, Auto-Clasp Type Closure, Bariatric	1/ea	
STDS856	Seat Belts, Velcro® Type Closure, Bariatric	1/ea	
<b>Oblique Projection Handrim</b>			
STDS1022	Oblique Projection Handrim	1/ea	
<b>Telescoping I.V. Pole Attachment</b>			
STDS820	Telescoping IV Pole Attachment	1/ea	
<b>Wheel Lock Extension</b>			
STDS601	Wheel Lock Extension	1/ea	
<b>Overhead Anti-Theft Device</b>			
STDS823	Overhead Anti-Theft Device	1/ea	
STDS821	Overhead Anti-Theft Device With IV Hooks	1/ea	
STDS834	Overhead Anti-Theft Device Single Pole	1/ea	
<b>Anti-Fold Bar</b>			
STDS806	Anti-Fold Bar	1/ea	
<b>Wheelchair Cane/Crutch Holder</b>			
STDS1034	Wheelchair Cane/Crutch Holder	1/ea	
<b>Heel Loops</b>			
STDS831	Heel Loops	1/pr	
<b>Limb Support</b>			
WASR	Limb Support, Right	1/ea	
WASL	Limb Support, Left	1/ea	
<b>Chart Carry Pocket</b>			
STDS835	16", 18" and 20" Wheelchairs w/ Nylon Upholstery	1/ea	

## Viper Wheelchair

Deluxe High-Strength, Lightweight, Dual-Axle



HCPCS  
K0004

- Viper weighs 32 lbs. (Excluding front rigging)
- Easier to propel and transport.
- Frame style eliminates seat guides and allows for custom backs and accessories.
- Back height adjustable from 18"– 20".
- Carbon steel black powder-coated frame double coated for an attractive, chip-proof, maintainable finish.
- Durable, flame retardant nylon upholstery resists mildew and bacteria.
- Composite Mag-style wheels with aluminum hand rims are lightweight and maintenance free.
- Urethane rear tires and casters offer superior performance, smoother ride and are lightweight.
- 8" Front casters have three height adjustments.
- Nylon, padded armrests provide added patient comfort.
- Flip-back arms allow for easy transfer.
- Composite steel lined front receiver is angled so the arm will lock into place every time.
- The front mounted release lever can be flipped up or down to unlock flip-up arm, depending on the patient's needs. (Figure A - B)
- Precision sealed wheel bearings in front and rear ensure long-lasting performance and reliability.
- Dual axle provides easy transition of seat height to hemi level.
- Comes with swing-away footrests or elevating leg rests with tool-free adjustable length riggings.
- Composite foot plates with heel loops are durable and lightweight.
- Comes standard with flip-up anti-tippers.
- Comes with push-to-lock wheel locks.
- Available in 12" and 14" seat widths.



Item #	Seat Width	Armrest	Product Front Riggings	UOM
L412DDA-SF	12"	Flip-Back Desk Arm	Swing-away Footrests	1/cs
L412DDA-ELR	12"	Flip-Back Desk Arm	Swing-away, Elevating Leg rests	1/cs
L414DDA-SF	14"	Flip-Back Desk Arm	Swing-away Footrest	1/cs
L414DDA-ELR	14"	Flip-Back Desk Arm	Swing-away, Elevating Leg rests	1/cs
L416DDA-SF	16"	Flip-Back Desk Arm	Swing-away Footrests	1/cs
L416DDA-ELR	16"	Flip-Back Desk Arm	Swing-away, Elevating Leg rests	1/cs
L416DFA-SF	16"	Flip-Back Full Arm	Swing-away Footrests	1/cs
L416DFA-ELR	16"	Flip-Back Full Arm	Swing-away, Elevating Leg rests	1/cs
L416ADDA-SF	16"	Flip-Back/Adj. Height Desk Arm	Swing-away Footrests	1/cs
L416ADDA-ELR	16"	Flip-Back/Adj. Height Desk Arm	Swing-away, Elevating Leg rests	1/cs
L418DDA-SF	18"	Flip-Back Desk Arm	Swing-away Footrests	1/cs
L418DDA-ELR	18"	Flip-Back Desk Arm	Swing-away, Elevating Leg rests	1/cs
L418DFA-SF	18"	Flip-Back Full Arm	Swing-away Footrests	1/cs
L418DFA-ELR	18"	Flip-Back Full Arm	Swing-away, Elevating Leg rests	1/cs
L418ADDA-SF	18"	Flip-Back/Adj. Height Desk Arm	Swing-away Footrests	1/cs
L418ADDA-ELR	18"	Flip-Back/Adj. Height Desk Arm	Swing-away, Elevating Leg rests	1/cs
L420DDA-SF	20"	Flip-Back Desk Arm	Swing-away Footrests	1/cs
L420DDA-ELR	20"	Flip-Back Desk Arm	Swing-away, Elevating Legrests	1/cs
L420DFA-SF	20"	Flip-Back Full Arm	Swing-away Footrests	1/cs
L420DFA-ELR	20"	Flip-Back Full Arm	Swing-away, Elevating Leg rests	1/cs

### specifications

Width Open (12" Seat   14" Seat)	20"   22.5"	Length with Riggings with 12" and 14" Seats	36"
Width Open (16" Seat   18" Seat)	22.5"   24.5"	Length with Riggings with 16", 18" and 20" Seat	42"
Width Open with 20" Seat	28"	Product Weight with 12" Seat	30 lbs.
Width Closed	12"	Product Weight with 14" Seat	31 lbs.
Height with 12" and 14" Seats	32"	Product Weight with 16" Seat	31.5 lbs.
Height with 16", 18" and 20" Seat	36"	Product Weight with 18" Seat	32 lbs.
Seat-To-Floor Height (12" - 14") (16" - 20")	13.5" - 15.5"   12.5" - 19.5"	Product Weight with 20" Seat	34 lbs.
Back Height	16" - 18"	Carton Shipping Weight	39 lbs. or less
Seat Depth with 12" Seat	12"	Weight Limit (with 12" and 14" seat)	250 lbs.
Seat Depth with 14" Seat	14"	Weight Limit (with 16", 18" and 20" seat)	300 lbs.
Seat Depth with 16", 18" and 20" Seat	16"	Warranty	Limited Lifetime

### accessories

#### Amputee Adapter

STDS826	Amputee Adapter	1/pr
STDS826C	Amputee Adapter	1/pr

#### Universal Forward Stabilizer

STDS860	Universal Forward Stabilizer	1/pr
---------	------------------------------	------

#### Anti-Tippers

STDS807	Anti-Tippers With Wheels	1/pr
STDS814	Anti-Tippers With Wheels	1/pr

#### 6" Wheel Lock Extension

STDS801	Wheel Lock Extension	1/ea
---------	----------------------	------

#### Seat Belts

STDS850	Seat Belts, Auto-Clasp Type Closure	1/ea
STDS851	Seat Belts, Velcro® Type Closure	1/ea
STDS855	Seat Belts, Auto-Clasp Type Closure, Bariatric	1/ea
STDS856	Seat Belts, Velcro® Type Closure, Bariatric	1/ea

#### Oblique Projection Handrim

STDS1022	Oblique Projection Handrim	1/ea
----------	----------------------------	------

#### Wheelchair Cane/Crutch Holder

STDS1034	Wheelchair Cane/Crutch Holder	1/ea
----------	-------------------------------	------

#### Limb Support

WASR	Limb Support, Right	1/ea
WASL	Limb Support, Left	1/ea

#### Heel Loops

STDS831	Heel Loops	1/pr
---------	------------	------

#### One-Arm Drive

STDS4055L	Left (For use with 18" and 20")	1/ea
STDS4055R	Right (For use with 18" and 20")	1/ea

#### Telescoping IV Pole Attachment

STDS820	Telescoping IV Pole Attachment	1/ea
---------	--------------------------------	------

#### Universal Oxygen "E" Cylinder Holder With I.V. Pole

STDS804	Universal Oxygen "E" Cylinder Holder with IV Pole Attachment	1/ea
---------	--	------

#### Seat Rail Extension

STDS810	Seat Rail Extensions	1/pr
STDS1818N	Black Extension	1/ea
STDS1618N	Black Extension	1/ea
STDS2018N	Seat Rail Extension Kit	1/e

#### Overhead Anti-Theft Device

STDS823	Overhead Anti-Theft Device	1/ea
STDS821	Overhead Anti-Theft Device With IV Hooks	1/ea
STDS834	Overhead Anti-Theft Device Single Pole	1/ea

#### Chart Carry Pocket

STDS835	16", 18" and 20" Wheelchairs w/ Nylon Upholstery	1/ea
---------	--	------



## Viper Plus GT Wheelchair

Deluxe High-Strength, Lightweight, Dual-Axle



HCPCS  
K0004

New “Built-in” Seat  
Rail Extension  
System and Extendable  
Upholstery

- Built-in seat rail extensions and extendable upholstery easily adjusts seat depth from 16" to 18". (Patent pending) (Figure A - C)
- All-Aluminum frame.
- Dual Axle allows for multiple seat-to-floor height positions.
- Adjustable height, flip-back, removable, padded arms.
- Weighs under 32 lbs. (Excluding front rigging)
- Over-center cross brace eliminates need for seat guides. Works with seating and positioning accessories.
- Adjustable angle back easily adjusts from 5° – 20°.
- Adjustable height back adjusts from 17" – 19" in 1" increments, adaptable for individual patient needs.
- Durable, heavy-gauge flame-retardant nylon upholstery with Velcro® modesty flaps, resists mildew and bacteria.
- Quick release, 24" composite Mag-style wheels are lightweight and maintenance free.
- Precision sealed wheel bearings in front and rear ensure long-lasting performance and reliability.
- Adjustable angle caster forks have three height adjustments and angle adjustability.
- Tool-free adjustable swing-away footrests also feature easy-to-access release handles.
- Urethane rear tires and casters offer superior performance, smoother ride and are lightweight.
- Adjustable anti-tipper with flip-up wheels. Never needs to be removed.
- Comes with push-to-lock wheel locks.
- Patent Pending.



Item #	Seat Width	Armrest	Product Front Riggings	Product Seat Extension	UOM
PLA416FBFAARAD-SF	16"	Flip-Back, Detachable, Adj. Height Full Arm	Swing-away Footrests	Built-in	1/cs
PLA416FBFAARAD-ELR	16"	Flip-Back, Detachable, Adj. Height Full Arm	Elevating Leg rests	Built-in	1/cs
PLA416FBDAARAD-SF	16"	Flip-Back, Detachable, Adj. Height Desk Arm	Swing-away Footrests	Built-in	1/cs
PLA416FBDAARAD-ELR	16"	Flip-Back, Detachable, Adj. Height Desk Arm	Elevating Leg rests	Built-in	1/cs
PLA418FBDAARAD-SF	18"	Flip-Back, Detachable, Adj. Height Desk Arm	Swing-away Footrests	Built-in	1/cs
PLA418FBDAARAD-ELR	18"	Flip-Back, Detachable, Adj. Height Desk Arm	Elevating Leg rests	Built-in	1/cs
PLA418FBFAARAD-SF	18"	Flip-Back, Detachable, Adj. Height Full Arm	Swing-away Footrests	Built-in	1/cs
PLA418FBFAARAD-ELR	18"	Flip-Back, Detachable, Adj. Height Full Arm	Elevating Leg rests	Built-in	1/cs
PLA420FBDAARAD-SF	20"	Flip-Back, Detachable, Adj. Height Desk Arm	Swing-away Footrests	Built-in	1/cs
PLA420FBDAARAD-ELR	20"	Flip-Back, Detachable, Adj. Height Desk Arm	Elevating Leg rests	Built-in	1/cs
PLA420FBFAARAD-SF	20"	Flip-Back, Detachable, Adj. Height Full Arm	Swing-away Footrests	Built-in	1/cs
PLA420FBFAARAD-ELR	20"	Flip-Back, Detachable, Adj. Height Full Arm	Elevating Leg rests	Built-in	1/cs
PLA422FBDAAR-SF	22"	Flip-Back, Detachable, Adj. Height Desk Arm	Swing-away Footrests	N.A.	1/cs
PLA422FBDAAR-ELR	22"	Flip-Back, Detachable, Adj. Height Desk Arm	Elevating Leg rests	N.A.	1/cs
PLA422FBFAAR-SF	22"	Flip-Back, Detachable, Adj. Height Full Arm	Swing-away Footrests	N.A.	1/cs
PLA422FBFAAR-ELR	22"	Flip-Back, Detachable, Adj. Height Full Arm	Elevating Legrests	N.A.	1/cs

### specifications

Width Open with 16" Seat	24"	Product Weight with 18" Seat	32 lbs.
Width Open with 18" Seat	26"	Product Weight with 20" Seat	33 lbs.
Width Open with 20" Seat	28"	Product Weight with 22" Seat	39.5 lbs.
Width Open with 22" Seat	30"	Carton Shipping Weight with 16" Seat	36 lbs.
Seat Width Closed	12.5"	Carton Shipping Weight with 18" Seat	37 lbs.
Height	36"	Carton Shipping Weight with 20" Seat	38 lbs.
Seat-To-Floor Height	17.5" - 19.5"	Carton Shipping Weight with 20" Seat	38 lbs.
Back Height	17" - 19"	Weight Limit with 16", 18" and 20" Seat	300 lbs.
Seat Depth	16" - 18"	Weight Limit with 22" Seat	350 lbs.
Length with Riggings	42"	Warranty	Limited Lifetime
Product Weight with 16" Seat	31 lbs.		

### accessories

#### Universal Forward Stabilizer

STDS860	Universal Forward Stabilizer	1/pr
---------	------------------------------	------

#### Anti-Tippers

STDS807	With Wheels	1/pr
---------	-------------	------

#### Seat belts

STDS850	Seat Belts, Auto-Clasp Type Closure	1/ea
STDS851	Seat Belts, Velcro® Type Closure	1/ea
STDS855	Seat Belts, Auto-Clasp Type Closure, Bariatric	1/ea
STDS856	Seat Belts, Velcro® Type Closure, Bariatric	1/ea

#### Telescoping I.V. Pole Attachment

STDS820	Telescoping IV Pole Attachment	1/ea
---------	--------------------------------	------

#### Universal Oxygen "E" Cylinder Holder with IV Pole

STDS804	Universal Oxygen "E" Cylinder Holder with IV Pole Attachment	1/ea
---------	--	------

#### Wheel Lock Extension

STDS801GT	Wheel Lock Extension	1/ea
-----------	----------------------	------

#### One Arm Drive

STDS835	16", 18" and 20" Wheelchairs w/ Nylon Upholstery	1/ea
---------	--	------

#### 8" Caster

STDS1002	Standard 8" Caster	1/ea
----------	--------------------	------

#### Amputee Adapters

STDS828GT	Amputee Adapters	1/pr
-----------	------------------	------

#### Flat-Free Wheel with Handrim

STDS840	Flat-free Wheel With Handrims	1/ea
---------	-------------------------------	------

#### Overhead Anti-Theft Device

STDS823	Overhead Anti-Theft Device	1/ea
STDS834	Overhead Anti-Theft Device Single Pole	1/ea

#### Wheelchair Cane/Crutch Holder

STDS1034	Wheelchair Cane/Crutch Holder	1/ea
----------	-------------------------------	------

#### Heel Loops

STDS831	Heel Loops	1/pr
---------	------------	------

#### Limb Support

WASR	Limb Support, Right	1/ea
WASL	Limb Support, Left	1/ea

#### Super Hemi Kit

STDSSHK	Super Hemi Kit	1/ea
---------	----------------	------

#### Chart Carry Pocket

STD54056	16", 18" and 20" models	
----------	-------------------------	--

## Viper Plus Reclining Wheelchair

Deluxe High Strength, Lightweight



HCPCS

K0004, E1226



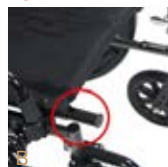
New “Built-in” Seat  
Rail Extension  
and Extendable  
Upholstery

Item #	Seat Width	Armrest	Product Front Riggings	UOM
PLA416RBDDA	16"	Flip-Back Detachable Desk Arm	Swing-away, Elevating Leg rests	1/cs
PLA416RBDFA	16"	Flip-Back Detachable Full Arm	Swing-away, Elevating Leg rests	1/cs
PLA418RBDDA	18"	Flip-Back Detachable Desk Arm	Swing-away, Elevating Leg rests	1/cs
PLA418RBDFA	18"	Flip-Back Detachable Full Arm	Swing-away, Elevating Leg rests	1/cs
PLA20RBDDA	20"	Flip-Back Detachable Desk Arm	Swing-away, Elevating Leg rests	1/cs
PLA420RBDFA	20"	Flip-Back Detachable Full Arm	Swing-away, Elevating Leg rests	1/cs

STEP 1



STEP 2



STEP 3



- Built-in seat rail extension and extendable upholstery easily adjusts seat depth from 16" or 18". (Patent pending) (Figure A - C)
- Attendant wheel locks in a convenient and easily accessible location
- Spreader bar acts as a back stabilizer and a convenient push handle for the attendant.
- Offset rear wheel position adds additional stability and equally distributes the patient's weight while in the various reclining positions.
- Hydraulic reclining mechanism allows for infinite adjustments up to 180°. (Figure D - E)
- Durable, flame-retardant nylon upholstery resists mildew and bacteria.
- Carbon steel frame with double-coated chrome for an attractive, chip-proof, maintainable finish.
- Composite Mag-style wheels are lightweight and maintenance free. Also features 8" front casters.
- Nylon, padded armrests provide added patient comfort, and feature the flip-back style for easy transfers.
- Precision sealed wheel bearings in front and rear ensure long-lasting performance and reliability.
- Standard dual axle provides easy transition of seat-to-floor height from adult to hemi-level.
- Front caster forks are adjustable in three positions.
- Comes standard with swing-away elevating leg rests.
- Composite foot plates are durable and lightweight.
- Urethane rear tires and casters offer superior performance, smoother ride and are lightweight.

## specifications

Width (open with 16" seat)	24"	Length with Riggings	42"
Width (open with 18" seat)	26.5"	Product Weight with 16" Seat	47 lbs.
Width (open with 20" seat)	28"	Product Weight with 18" Seat	49 lbs.
Width (closed)	12.5"	Product Weight with 20" Seat	51 lbs.
Height	50"	Carton Shipping Weight with 16" Seat	53 lbs.
Seat-To-Floor Height	19.5"	Carton Shipping Weight with 18" Seat	55 lbs.
Back Height (without   with headrest)	23"   33"	Carton Shipping Weight with 20" Seat	57 lbs.
Seat Depth with 16" and 18" Seat	16"	Weight Limit	300 lbs.
Seat Depth with 20" Seat	18"	Warranty	Limited Lifetime

## accessories

### Universal Forward Stabilizer

STDS860	Universal Forward Stabilizer	1/pr
---------	------------------------------	------

### Anti-Tippers

STDS832	Without Wheels	1/pr
---------	----------------	------

### 6" Wheel Lock Extension

STDS801	Wheel Lock Extension	1/ea
---------	----------------------	------

### Seat Belts

STDS850	Seat Belts, Auto-Clasp Type Closure	1/ea
STDS851	Seat Belts, Velcro® Type Closure	1/ea
STDS855	Seat Belts, Auto-Clasp Type Closure, Bariatric	1/ea

### Universal O<sub>2</sub> Cylinder Carry Bag

STDS6008-1	Oxygen Cylinder Carry Bag for Wheelchair	1/ea
------------	--	------

### Oblique Projection Handrim

STDS1022	Oblique Projection Handrim	1/ea
----------	----------------------------	------

### 8" Caster

STDS1002	Standard 8" Caster	1/ea
----------	--------------------	------

### Flat-Free Wheel With Handrim

STDS840	Flat-free Wheel With Handrims	1/ea
---------	-------------------------------	------

### Overhead Anti-Theft Device

STDS823	Overhead Anti-Theft Device	1/ea
STDS821	Overhead Anti-Theft Device With IV Hooks	1/ea
STDS834	Overhead Anti-Theft Device Single Pole	1/ea

### Wheelchair Cane/Crutch Holder

STDS1034	Wheelchair Cane/Crutch Holder	1/ea
----------	-------------------------------	------

### Heel Loops

STDS831	Heel Loops	1/pr
---------	------------	------

### Limb Support

WASR	Limb Support, Right	1/ea
WASL	Limb Support, Left	1/ea

### Chart Carry Pocket

STDS835	16", 18" and 20" Wheelchairs w/Nylon Upholstery	1/ea
---------	---	------



## Cougar Wheelchair

Ultralight Aluminum Wheelchair



HCPCS  
**K0005**

Item #	Seat Width	Armrest	Product Front Riggings	UOM
AK516ADA-AELR	16"	Detachable "T" Style Desk Arm	Swing-away Elevating Leg rest	1/cs
AK516ADA-ASF	16"	Detachable "T" Style Desk Arm	Swing-away Footrest	1/cs
AK518ADA-AELR	18"	Detachable "T" Style Desk Arm	Swing-away Elevating Leg rest	1/cs
AK518ADA-ASF	18"	Detachable "T" Style Desk Arm	Swing-away Footrest	1/cs



- Ultra-light, weighs less than 27 lbs. (K0005).
- Forward folding back to reduce size.
- Tool-free back height adjustable from 17"-20 ½".
- Seat depth adjustable from 16"-18".
- Multi-position back can adjust 15°.
- Rigidity bar provides support.
- Quick-release rear wheels. (Figure A)
- Semi-Pneumatic tires on a 24" spoke wheel provide a smooth, true roll.
- 3" of depth adjustment in the overall wheelbase.
- Front casters are angle adjustable and height adjustable in three positions.
- Arm rest can be flipped allowing 2" width adjustment.
- Nylon upholstery is breathable, lightweight and comfortable.
- Back folds forward for storage. (Figure B - C)
- Adjustable aluminum wheel locks.
- Swing-away footrests swing in and out.
- Lightweight, composite foot plates with heel loops come standard.
- Optional adjustable height arm. (sold separately)

#### specifications

Width Open with 16" Seat	24"	Seat Depth	16"
Width Open with 18" Seat	26"	Length with Riggings	44"
Width Closed	12"	Product Weight	27 lbs.
Height	37"	Carton Shipping Weight	32 lbs.
Seat-To-Floor Height	17.5" - 19.5"	Weight Limit	250 lbs.
		Warranty	Limited Lifetime

#### accessories

##### Universal Forward Stabilizer

STDS860	Universal Forward Stabilizer	1/pr
---------	------------------------------	------

##### Anti-Tippers

STDS2A4326	With Wheels	1/pr
------------	-------------	------

##### Seat Belts

STDS850	Seat Belts, Auto-Clasp Type Closure	1/ea
STDS851	Seat Belts, Velcro® Type Closure	1/ea

##### Telescoping IV Pole Attachment

STDS820	Telescoping IV Pole Attachment	1/ea
---------	--------------------------------	------

##### Wheel Lock Extension

STDS601	Wheel Lock Extension	1/ea
---------	----------------------	------

##### Overhead Anti-Theft Device

STDS823	Overhead Anti-Theft Device	1/ea
STDS821	Overhead Anti-Theft Device With IV Hooks	1/ea
STDS834	Overhead Anti-Theft Device Single Pole	1/ea

##### Anti-Fold Bar

STDS806	Anti-Fold Bar	1/ea
---------	---------------	------

##### Wheelchair Cane/Crutch Holder

STDS1034	Wheelchair Cane/Crutch Holder	1/ea
----------	-------------------------------	------

##### Heel Loops

STDS831	Heel Loops	1/pr
---------	------------	------

##### Chart Carry Pocket

STDS835	Chart Carry Pocket	1/ea
---------	--------------------	------

##### Adjustable Height Arm

AK5ADJARMKIT	Adjustable Height Arm, Right and Left	1/ea
--------------	---------------------------------------	------



KG P800



KG A800



## Kanga TS Pediatric & Standard Folding Tilt-in-Space Wheelchair Frame

Item #	Product Size	Growth Frame	Color	Product Overall Width Open	Product Seat Depth	Product Weight	Product Weight Limit	UOM
KG P800	Pediatric	Can be configured for 10", 12" & 14"	Red	18" - 22"	13" - 15"	34 lbs. w/ wheels	200 lbs.	1/bx
KG A800	Adult	Can be configured for 16", 18" & 20"	Black	24" - 28"	17" - 19"	35 lbs. w/ wheels	300 lbs.	1/bx

- Durable lightweight aluminum frame.
- Height and angle adjustable flip up armrests.
- Height adjustable push handles.
- Tilt-in-Space up to 45 degrees.
- 6" of seat depth.
- Seat-to-back angle adjustable.
- Curb assist levers.
- 20" rear semi-pneumatic quick-release wheels.
- Accommodates most custom rehab seating and positioning systems.
- Crash tested with Kanga TS seating and meets bus transit requirements.
- Folds for easy transport.

### specifications

Overall Width (closed)	12"
Product Weight (KG P800)	21 lbs.
Product Weight (KG A800)	25 lbs.
Carton Shipping Weight (KG P800)	34.5 lbs.
Carton Shipping Weight (KG A800)	38 lbs.
Warranty	Limited Lifetime

## Kanga TS Solid Seat



Item #	Product Size	For Use With	UOM
KG 1033	10"	KG P800	1/bx
KG 1233	12"	KG P800	1/bx
KG 1433	14"	KG P800	1/bx
KG 1633	16"	KG A800	1/bx
KG 1833	18"	KG A800	1/bx
KG 2033	20"	KG A800	1/bx

## Kanga TS Solid Back



Item #	Product Size	For Use With	UOM
KG 1032	10"	KG P800	1/bx
KG 1232	12"	KG P800	1/bx
KG 1432	14"	KG P800	1/bx
KG 1632	16"	KG A800	1/bx
KG 1832	18"	KG A800	1/bx
KG 2032	20"	KG A800	1/bx

## Kanga TS Headrest



Item #	Product Description	UOM
KG 8000	Headrest for Kanga TS Folding Wheelchairs	1/bx

- Height and depth adjustable headrest can be adapted to any solid back wheelchair.

## Kanga TS Footrest



Item #	Product Size	For Use With	UOM
KG 1045	10"	KG P800	1 pr/bx
KG 1245	12" & 14"	KG P800	1 pr/bx
KG A045	16", 18" & 20"	KG A800	1 pr/bx

- Swing-away hangars with foot rests. The foot plates are angle adjustable.



## Kanga TS Anti-Tippers



Item #	Product Description	UOM
KG 1020	Anti-Tippers for Kanga TS Folding Wheelchairs	1 pr/bx

- Height adjustable anti-tippers

## Kanga TS Laterals



Item #	Product Description	UOM
KG 1038	For KG P800	1 pr/bx
KG 1039	For KG A800	1 pr/bx

- Height adjustable laterals assists stabilization and alignment of the trunk and pelvis.

## Kanga TS Heel and Toe Loops



Item #	Product Description	UOM
KG 8045	Heel and Toe Loops for Pediatric Kanga TS Wheelchair	1pr/bx
KG 8046	Heel and Toe Loops for Adult Kanga TS Wheelchair	1pr/bx

- Adjustable heel and toe loops for the Kanga TS foot rests.

## Kanga TS Abductors



Item #	Product Description	UOM
KG 1041	Abductors for Kanga TS Folding Wheelchairs	1pr/bx

- Depth adjustable abductor is used to position user's knees and keep them apart if necessary.

## Kanga TS Adductors



Item #	UOM
KG 1040	1pr/bx

- Insert at the slots on both sides of wheelchair to control lower extremity positioning. It prevents adductions of user's legs.

## Kanga TS Canopy



Item #	Product Description	UOM
KG 8026	Kanga TS Canopy	1/bx
KG 8027	For KG A800	1/bx

- Height adjustable canopy provides protection from sun and/or rain. It features a clear flap-covered observation panel.

## Kanga TS Upper-Extremity Tray



Item #	Product Description	UOM
KG 8024	Kanga TS Upper Extremity Tray	1/bx
KG 8025	Kanga TS Tray	1/bx

- Tray slides onto armrest, features a safety lip and is easy to clean. It provides trunk stabilization and is great for feeding.

## Kanga TS Positioning Belt



Item #	Product Description	UOM
KG 1042	Harness for KG P800	1/bx
KG 2042	Harness for KG A800	1/bx

- Adjustable five-point harness with quick-release clasp. It fastens over the shoulders and around the waist and attaches to the back of the wheelchair with Velcro®. It is designed to aid in proper positioning and is comfortable enough for all-day use.



## Kanga TS Pediatric Tilt-in-Space Wheelchair Inclusive System

Item #	Product Size	Color	Product Seat-to-Floor Height	Product Overall Width	Product Seat Depth	Product Overall Depth w/ Riggings	Product Weight	Product Weight Capacity	UOM
KG 1000	Pediatric, 10"	Red	21" (Front) - 20" (Back)	18" (open) - 12" (Closed)	11.5"-13.5"	37"	47 lbs.	200 lbs.	1/bx
KG 1200	Pediatric, 12"	Red	21" (Front) - 20" (Back)	20" (open) - 12" (Closed)	11.5"-13.5"	37"	47 lbs.	200 lbs.	1/bx
KG 1400	Pediatric, 14"	Red	21" (Front) - 20" (Back)	22" (open) - 12" (Closed)	11.5"-13.5"	37"	47 lbs.	200 lbs.	1/bx
KG 1600	Adult, 16"	Black	22" (Front) - 21" (Back)	24" (open) - 12" (Closed)	15.5"-17.5"	42"	52 lbs.	300 lbs.	1/bx
KG 1800	Adult, 18"	Black	22" (Front) - 21" (Back)	26" (open) - 12" (Closed)	15.5"-17.5"	42"	52 lbs.	300 lbs.	1/bx
KG 2000	Adult, 20"	Black	22" (Front) - 21" (Back)	28" (open) - 12" (Closed)	15.5"-17.5"	42"	52 lbs.	300 lbs.	1/bx

- Durable lightweight aluminum frame.
- An economical seating system that includes seat, back, five-point harness, depth adjustable abductor, hip guides, lateral supports and curved headrest. (Figure A)
- Height and angle adjustable flip-back armrests.
- Height adjustable push handles.
- Tilt-in-Space up to 45°.
- 6" of adjustable seat depth.
- Seat-to-back angle adjustable.
- Angled seat to prevent forward sliding.
- Swing away, height adjustable foot rests with foot and ankle positioner.
- Angle adjustable plastic foot plates.
- 20" rear semi-pneumatic quick-release wheels.
- Frame accommodates most custom rehab seating and positioning systems. Curb assist levers.
- Height adjustable anti-tippers.
- Crash tested and meets bus transit requirements.
- Folds for easy transport.

### specifications

Carton Shipping Weight (pediatric)	53 lbs.
Carton Shipping Weight (adult)	59 lbs.
Warranty	Limited Lifetime



STDSCS1618N



STDSB1618V



STDS1818N



STDSB1818V

### Seat Rail Extension Kit, 16" Wide

Item #	Product Description	Color	For Use With	UOM
STDSCS1618V	Chrome Extension	Black Vinyl Upholstery	Silver Sport II and Chrome Sport	1/ea
STDS1618N	Black Extension	Black Nylon Upholstery	Viper and Sentra EC	1/ea
STDSB1618V	Black Extension	Black Vinyl Upholstery	Sentra Plus	1/ea
STDSB1618NC	Black Extension	Black Nylon Upholstery	Cirrus III	1/ea
STDSK31618N	Black Extension	Black Nylon Upholstery	Cruiser III	1/ea
STDSC4A1618N	Black Extension	Black Nylon Upholstery	Cirrus IV with Adjustable Height Arms	1/ea

- Kit comes complete with seat upholstery and attached rail extension to add 2" to depth of the wheelchair seat. Kit installation results in 18" seat depth. For replacement of 16" wide, 16" deep upholstery.

### Seat Rail Extension Kit, 18" Wide

Item #	Product Description	Color	For Use With	UOM
STDS1818N	Black Extension	Black Nylon Upholstery	Viper and Cirrus IV	1/ea
STDSB1818V	Black Extension	Black Vinyl Upholstery	Sentra Plus	1/ea
STDSCS1818V	Chrome Extension	Black Vinyl Upholstery	Silver Sport and Chrome Sport	1/ea
STDSK31818N	Black Extension	Black Nylon Upholstery	Cruiser III	1/ea
STDSC4A1818N	Black Extension	Black Nylon Upholstery	Cirrus IV with Adjustable Height Arms	1/ea

- Kit comes complete with seat upholstery and attached rail extension to add 2" to depth of wheelchair seat. For replacement of 18" wide, 16" deep upholstery.



## Seat Rail Extensions (Only)

Adds 2" to Depth of Wheelchair Seat



STDS810

Item #	Product Description	Color	For Use With	UOM
STDS810	Seat Rail Extensions	Black	Viper and Viper Plus GT purchased prior to 6/11	1/pr
STDS811	Seat Rail Extensions	Chrome	Sentra EC 20"	1/pr
STDS813	Seat Rail Extensions	Black	Cirrus IV with silver vein finish (16" and 18" seat widths only)	1/pr

## Seat Belt



STDS850



STDS851

Item #	Product Description	Color	For Use With	UOM
STDS850	Seat Belts, Auto-Clasp Type Closure	Black	All Drive and other leading manufacturers' wheelchairs. Can accommodate waist sizes up to 48 inches.	1/ea
STDS851	Seat Belts, Velcro® Type Closure	Black	All Drive and other leading manufacturers' wheelchairs. Can accommodate waist sizes up to 48 inches.	1/ea

## Universal Forward Stabilizers



STDS860

Item #	Product Description	Color	For Use With	UOM
STDS860	Universal Forward Stabilizer	Chrome	Sentra EC 20", Sentra HD 20", Sentra Reclining, Cruiser III, Cirrus IV, Viper, Viper Plus GT, Viper Plus Reclining Wheelchairs	1/pr
STDS862	Universal Forward Stabilizer	Chrome	20", 22" and 24" Sentra EC, Silver Sport 1 and 2 Wheelchairs	1/pr

## Bariatric Seat Belts



STDS855



STDS856

Item #	Product Description	Color	For Use With	UOM
STDS855	Seat Belts, Auto-Clasp Type Closure, Bariatric	Black	All Drive and other leading manufacturers' wheelchairs. Can accommodate waist sizes up to 60 inches.	1/ea
STDS856	Seat Belts, Velcro® Type Closure, Bariatric	Black	All Drive and other leading manufacturers' wheelchairs. Can accommodate waist sizes up to 60 inches.	1/ea

## Amputee Adapters



Item #	Product Description	Color	For Use With	UOM
STDS826	Amputee Adapter	Black	Cirrus IV, Viper with black frame	1/pr



STDS826C	Amputee Adapter	Chrome	Viper 16", 18" and 20" Wide wheelchairs	1/pr
----------	-----------------	--------	---	------




STDS827	Amputee Adapter	Chrome	Sentra Heavy Duty 20", 22" and 24", Sentra EC 24" Wide only wheelchairs (not for wheelchairs with serial numbers that begin with 'Y')	1/pr
---------	-----------------	--------	---	------



STDS828GT	Amputee Adapters	Black	Viper Plus GT wheelchairs	1/pr
-----------	------------------	-------	---------------------------	------

## Anti-Tippers

	Item #	Product Description	Color	For Use With	UOM
	STDS802	With Wheels	Chrome	Sentra, Sentra EC, Sentra Heavy Duty, Sentra Reclining and Winnie Series wheelchairs	1/pr
	STDS805	Standard	Black	Cirrus IV wheelchairs with silver finish (without adjustable height arms)	1/pr
	STDS814	With Wheels	Black	12" and 14" Viper, Winnie II, Infinity, and Super Hemi Kit (Item #STDSSHK)	1/pr
	STDS819	With wheels	Black	Cruiser III wheelchairs	1/pr
	STDS829	With wheels	Chrome	Sentra Heavy Duty, Sentra Heavy Duty (Extra -Extra Wide) (26", 28", 30")	1/pr
	STDS2A4326	With Wheels	Chrome	Cougar wheelchair	1/pr
	STDS807	With Wheels	Black	Viper, Viper Plus GT, Cruiser III and most other leading manufacturers' wheelchairs	1/pr
	STDS808	With Wheels	Chrome	Viper, Viper Plus GT, Cruiser III and most other leading manufacturers' wheelchairs	1/pr
	STDS818	Anti Tippers Without Wheels	Chrome	Sentra Reclining, Silver Sport 1 & 2, Chrome Sport, Baratric Sentra EC Heavy Duty wheelchairs.	1/pr
	STDS4Y4712	Without Wheels	Silver Vein	Silver Sport Reclining wheelchair	1/pr
	STDS832	Without Wheels	Black	Viper Plus Reclining	1/pr
	STDS833N	Anti-Tippers With Wheels	Black	Silver Sport 1 and Silver Sport 2, Rebel and Chrome Sport wheelchairs	1/pr
	STDS838	With Wheels	Black	Cirrus IV with Adjustable Height Arms	1/pr





## Premier One Foam Cushion

Item #	Product Dimensions	Product HCPCS	UOM
M8063	16" (W) x 16" (D) x 3" (H) (Replaces Mason # 8063)	E2601	1/ea, 4/cs
M8064	18" (W) x 16" (D) x 3" (H) (Replaces Mason # 8064)	E2601	1/ea, 4/cs
M8065	20" (W) x 16" (D) x 3" (H) (Replaces Mason # 8065)	E2601	1/ea, 4/cs
M8070	20" (W) x 18" (D) x 3" (H) (Replaces Mason # 8070)	E2601	1/ea, 4/cs
M8076	22" (W) x 16" (D) x 3" (H) (Replaces Mason # 8076)	E2602	1/ea, 4/cs
M8077	22" (W) x 18" (D) x 3" (H) (Replaces Mason # 8077)	E2602	1/ea, 4/cs
M8078	22" (W) x 20" (D) x 3" (H) (Replaces Mason # 8078)	E2602	1/ea, 4/cs
M8079	24" (W) x 18" (D) x 3" (H) (Replaces Mason # 8079)	E2602	1/ea, 4/cs
M8080	24" (W) x 20" (D) x 3" (H) (Replaces Mason # 8080)	E2602	1/ea, 4/cs
M8081	26" (W) x 18" (D) x 3" (H) (Replaces Mason # 8081)	E2602	1/ea, 4/cs
M8082	26" (W) x 20" (D) x 3" (H) (Replaces Mason # 8082)	E2602	1/ea, 4/cs

- The Premier One Foam cushion is designed to provide comfort and stability with a simple, economical design.
- Aerated foam keeps the patient cool and dry.
- The low shear water-resistant stretch Nylon cover helps maintain sensitive skin tissue.

### specifications

Cover Material	Fluid-Resistant Stretch Nylon
Weight Capacity	250 lbs.   400 lbs.
Warranty	1 Year Limited





## Molded General Use Wheelchair Cushion

Item #	Product Dimensions	Product HCPCS	UOM
14880	16" (W) x 16" (D) x 2" (H)	E2601	1/ea
14887	18" (W) x 16" (D) x 2" (H)	E2601	1/ea
14881	20" (W) x 16" (D) x 2" (H)	E2601	1/ea
14907	16" (W) x 18" (D) x 2" (H)	E2601	1/ea
14908	18" (W) x 18" (D) x 2" (H)	E2601	1/ea
14909	20" (W) x 18" (D) x 2" (H)	E2601	1/ea

- A unique construction of high-resilient (HR) molded foam provides optimal support, stabilization and pressure redistribution.
- Designed for clients who are at low risk for skin breakdown.
- Removable zipper's nylon cover is low-shear, vapor permeable and water-resistant.
- Cover has a "Non-Slip" bottom for comfort and safety.
- 250 lb. weight capacity, 300 lb. weight capacity (14909).

### specifications

Cover Material	Fluid-Resistant Nylon
Weight Capacity	250 lbs.   300 lbs.
Warranty	1 Year Limited





## General Use Back Cushion with Lumbar Support

Item #	Product Description	Product Dimensions	Product HCPCS	UOM
14906 (Replaces Mason # 8030)	Wheelchair Back Cushion	16" (W) x 17" (D) x 2.5" (H)	E2611	1/ea
14889 (Replaces Mason # 8031)	Wheelchair Back Cushion	18" (W) x 17" (D) x 2.5" (H)	E2611	1/ea
14920 (Replaces Mason # 8032)	Wheelchair Back Cushion	20" (W) x 17" (D) x 2.5" (H)	E2611	1/ea
8033	Wheelchair Back Cushion	22" (W) x 19" (D) x 2.5" (H)	E2612	1/ea

- Memory-foam back cushion provides support, comfort and a tactile curve to improve posture.
- Durable Masonite board secured on back of foam core prevents hammocking in sling-back wheelchairs.
- Conforms to lumbar curve to support lower back.
- Sealed liner protects foam core from moisture.
- Non-slip vinyl back prevents the cushion from sliding.

### specifications

Cover Material	Half P/U, Half Vinyl
Weight Limit	N/A
Warranty	18 Months Limited



## General Use Gel/Foam Gel "E" 2" Seat Cushion

## Gel-U-Seat™ Lite General Use 2" Gel Cushion with Stretch Cover

Item #	Product Dimensions	Product HCPCS	UOM
14888	18" (W) x 16" (D) x 2" (H)	E2601	1/ea

- The General Use Gel "E" 2" Seat Cushion is a pressure reduction cushion that is designed to assist in the prevention, treatment and management of pressure ulcers.
- High-Density foam encapsulates a viscous gel bladder that provides proper immersion and envelopment around the bony prominences.
- The zippered, removable and replaceable cover is made of a fluid-proof, urethane-coated nylon top cover and fluid-proof vinyl bottom cover for durability.

### specifications

Cover Material	Fluid-Resistant Nylon
Weight Capacity	250 lbs.
Warranty	1 Year Limited

Item #	Product Dimensions	Product HCPCS	UOM
8040-1	16" (W) x 16" (D) x 2" (H)	E2601	1/ea, 4/cs
8040-2	18" (W) x 16" (D) x 2" (H)	E2601	1/ea, 4/cs
8040-3	20" (W) x 16" (D) x 2" (H)	E2601	1/ea, 4/cs
8040-4	20" (W) x 18" (D) x 2" (H)	E2601	1/ea, 4/cs
8040-5	18" (W) x 18" (D) x 2" (H)	E2601	1/ea, 4/cs
8040-6	22" (W) x 16" (D) x 2" (H)	E2602	1/ea, 4/cs
8040-7	22" (W) x 18" (D) x 2" (H)	E2602	1/ea, 4/cs
8040-8	24" (W) x 16" (D) x 2" (H)	E2602	1/ea, 4/cs
8040-9	24" (W) x 18" (D) x 2" (H)	E2602	1/ea, 4/cs
8040-10	20" (W) x 20" (D) x 2" (H)	E2602	1/ea, 4/cs

- The Gel-U-Seat™ Lite cushion is specifically designed to redistribute pressure to assist in the prevention of pressure ulcers while providing patient comfort.
- Cushion incorporates high-density foam encapsulating a dual-chamber gel bladder.
- Water-resistant, low-shear stretch nylon cover with tie straps to secure to wheelchair.

### specifications

Cover Material	Fluid-Resistant Stretch Nylon
Weight Capacity	Up to 20" 275 lbs., 22" and up 500 lbs.
Warranty	1 Year Limited



## 3" Gel/Foam Gel-U-Seat™ Cushion

Item #	Product Description	Product Dimensions	Product HCPCS	UOM
8046-1	3" Gel/Foam Cushion (Replaces Mason # 8045-1)	16" (W) x 16" (D) x 3" (H)	E2603	1/ea, 4/cs
8046-2	3" Gel/Foam Cushion (Replaces Mason # 8045-2)	18" (W) x 16" (D) x 3" (H)	E2603	1/ea, 4/cs
8046-3	3" Gel/Foam Cushion (Replaces Mason # 8045-3)	20" (W) x 16" (D) x 3" (H)	E2603	1/ea, 4/cs
8046-4	3" Gel/Foam Cushion	20" (W) x 18" (D) x 3" (H)	E2603	1/ea, 4/cs
8046-5	3" Gel/Foam Cushion	22" (W) x 18" (D) x 3" (H)	E2604	1/ea, 4/cs
8046-6	3" Gel/Foam Cushion	22" (W) x 20" (D) x 3" (H)	E2604	1/ea, 4/cs
8046-7	3" Gel/Foam Cushion	24" (W) x 18" (D) x 3" (H)	E2604	1/ea, 4/cs
8046-8	3" Gel/Foam Cushion	24" (W) x 20" (D) x 3" (H)	E2604	1/ea, 4/cs
8046-9	3" Gel/Foam Cushion	26" (W) x 18" (D) x 3" (H)	E2604	1/ea, 4/cs
8046-10	3" Gel/Foam Cushion	26" (W) x 20" (D) x 3" (H)	E2604	1/ea, 4/cs

- The Gel-U-Seat™ cushion is specifically designed to redistribute pressure to assist in the prevention of pressure ulcers while providing patient comfort.
- Cushion incorporates high-density foam encapsulating a dual-chamber gel bladder.
- Water-resistant, low-shear stretch nylon cover with tie straps to secure to wheelchair.

### specifications

Cover Material	Half P/U, Half Vinyl
Weight Capacity	Up to 20" 275 lbs., 22" and up 500 lbs.
Warranty	1 Year Limited





## Gel "E" 3" Wheelchair Cushion

Item #	Product Description	Product Dimensions	Product HCPCS	UOM
14886	3" Gel/Foam Cushion	18" (W) x 16" (D) x 3" (H)	E2603	1/ea
14891	3" Gel/Foam Cushion	16" (W) x 16" (D) x 3" (H)	E2603	1/ea
14894	3" Gel/Foam Cushion	20" (W) x 16" (D) x 3" (H)	E2603	1/ea
14902	3" Gel/Foam Cushion	22" (W) x 18" (D) x 3" (H)	E2604	1/ea
14903	3" Gel/Foam Cushion	24" (W) x 18" (D) x 3" (H)	E2604	1/ea

- Pressure redistributing cushion designed to assist in the prevention, treatment and management of pressure ulcers.
- Viscous gel bladder is encased in polyurethane foam shell and provides optimal pressure redistribution, support and comfort.
- Removable, zippered cover is constructed as follows:
  - Cover top is a urethane-coated nylon that is low-shear, vapor permeable and water-resistant.
  - Cover base is waterproof vinyl for durability.

### specifications

Cover Material	Half Nylon, Half Vinyl
Weight Capacity	Up to 20" 275 lbs.   22" and up 500 lbs.
Warranty	18 Months Limited



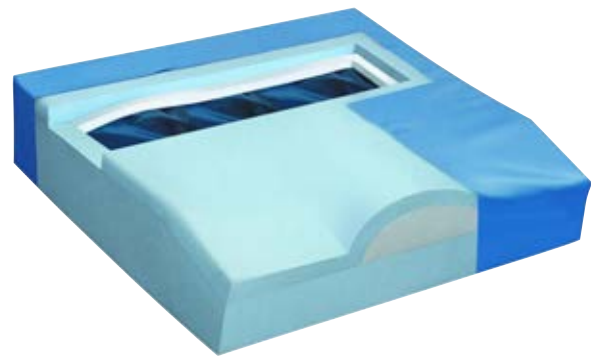
## drive™ Mason™ Convo-Gel™ Cushion

Item #	Product Description	Product Dimensions	Product HCPCS	UOM
8049-U1	3" Gel/Convuluted Foam Cushion (Replaces Mason # 8049-1)	16" (W) x 16" (D) x 3" (H)	E2603	1/ea, 4/cs
8049-U2	3" Gel/Convuluted Foam Cushion (Replaces Mason # 8049-2)	18" (W) x 16" (D) x 3" (H)	E2603	1/ea, 4/cs
8049-U3	3" Gel/Convuluted Foam Cushion (Replaces Mason # 8049-3)	20" (W) x 16" (D) x 3" (H)	E2603	1/ea, 4/cs
8049-U4	3" Gel/Convuluted Foam Cushion	20" (W) x 18" (D) x 3" (H)	E2603	1/ea, 4/cs
8049-U5	3" Gel/Convuluted Foam Cushion	22" (W) x 18" (D) x 3" (H)	E2604	1/ea, 4/cs
8049-U6	3" Gel/Convuluted Foam Cushion	22" (W) x 20" (D) x 3" (H)	E2604	1/ea, 4/cs
8049-U7	3" Gel/Convuluted Foam Cushion	24" (W) x 18" (D) x 3" (H)	E2604	1/ea, 4/cs
8049-U8	3" Gel/Convuluted Foam Cushion	24" (W) x 20" (D) x 3" (H)	E2604	1/ea, 4/cs
8049-U9	3" Gel/Convuluted Foam Cushion	26" (W) x 18" (D) x 3" (H)	E2604	1/ea, 4/cs
8049-U10	3" Gel/Convuluted Foam Cushion	26" (W) x 20" (D) x 3" (H)	E2604	1/ea, 4/cs

- The Convo-Gel™ cushion is specifically designed to redistribute pressure while providing patient comfort.
- Cushion incorporates high-density convoluted foam over and under a dual-chamber gel bladder.
- Fluid-resistant, low-shear stretch nylon cover with tie straps to secure to wheelchair.

### specifications

Cover Material	Fluid-Resistant Stretch Nylon
Weight Capacity	Up to 20" 275 lbs.   22" and up 500 lbs.
Warranty	1 Year Limited



## Titanium Gel/Foam Wheelchair Cushion

Item #	Product Description	Product Dimensions	Product HCPCS	UOM
FPT-1	3" Gel/Foam Cushion	16" (W) x 16" (D) x 3.5" (H)	E2607	1/ea
FPT-2	3" Gel/Foam Cushion	18" (W) x 16" (D) x 3.5" (H)	E2607	1/ea
FPT-3	3" Gel/Foam Cushion	20" (W) x 16" (D) x 3.5" (H)	E2607	1/ea
FPT-4	3" Gel/Foam Cushion	22" (W) x 18" (D) x 3.5" (H)	E2608	1/ea
FPT-5	3" Gel/Foam Cushion	22" (W) x 20" (D) x 3.5" (H)	E2608	1/ea
FPT-6	3" Gel/Foam Cushion	24" (W) x 18" (D) x 3.5" (H)	E2608	1/ea
FPT-7	3" Gel/Foam Cushion	24" (W) x 20" (D) x 3.5" (H)	E2608	1/ea
FPT-8	3" Gel/Foam Cushion	26" (W) x 20" (D) x 3.5" (H)	E2608	1/ea

- The Titanium cushion is specifically designed to offer superior pressure redistribution and positioning.
- Top layer of foam combined with a dual-chamber gel bladder.
- Middle layer of high-resilient, high-density foam encourages proper patient posture by allowing the patient to immerse into the cushion.
- Pommel acts as a built-in leg abductor.
- Low-shear, fluid-resistant stretch nylon cover helps to maintain sensitive skin tissue.
- Non-skid bottom offers additional stability.

### specifications

Cover Material	P/U
Weight Capacity	Up to 20" 275 lbs.   22" and Up 500 lbs.
Warranty	1 Year Limited



Finally! An Affordable, Yet Clinically Effective Option in the Adjustable, Skin Protection Cushion Category



#### COMPARE TO

Compare to Roho® Hi & Lo Profile Single Compartment Cushions



## Balanced Aire Adjustable Cushion

Item #	Product Description	Product Dimensions	Product HCPCS	UOM
8047-16	Adjustable Air Cushion	16" (W) x 16" (D) x 4" (H)	E2622	1/ea
8047-16-2	Adjustable Air Cushion	16" (W) x 16" (D) x 2" (H)	E2622	1/ea
8047-18	Adjustable Air Cushion	18" (W) x 16" (D) x 4" (H)	E2622	1/ea
8047-18-2	Adjustable Air Cushion	18" (W) x 16" (D) x 2" (H)	E2622	1/ea
8047-20	Adjustable Air Cushion	20" (W) x 16" (D) 4" (H)	E2622	1/ea
8047-20-2	Adjustable Air Cushion	20" (W) x 16" (D) 2" (H)	E2622	1/ea

- The Balanced Aire Adjustable Cushion is our premier pressure management cushion.
- Offering dynamic positioning, unmatched stability and an advanced level of pressure ulcer prevention.
- Flexible interconnected, independent air cells allow for deep immersion into the cushion.
- Optimal pressure redistribution helps increase blood flow necessary for healthy tissue maintenance.
- Water-resistant, low-shear stretch nylon Cover with adjustable locking straps and non-skid bottom to secure cushion to the wheelchair.
- Hand pump to adjust the cushions to individual patient comfort.
- Available in 4" high profile and 2" low profile heights.

#### specifications

Cover Material	Fluid-Resistant Stretch Nylon
Weight Capacity	300 lbs.
Warranty	1 Year Limited



NEW

1P  
PACK


NEW

1P  
PACK

250  
lbs


## Wedge Cushion with Stretch Cover

Item #	Product Dimensions	UOM
8133	16" (W) x 16" (D) x 4"- 2" (H)	1/ea, 4/cs
8134	18" (W) x 16" (D) x 4"- 2" (H)	1/ea, 4/cs
8135	20" (W) x 16" (D) x 4"- 2" (H)	1/ea, 4/cs

- Wedge design helps prevent patient from sliding forward.
- Firm foundation reduces pressure caused by sling-seat hammockings.
- High-density foam increases stability and comfort.

### specifications

Cover Material	Fluid-Resistant Stretch Nylon, Half P/U, Half Vinyl
Weight Capacity	250 lbs.
Warranty	Limited 1 Year

## Pommel Wedge Cushion with Stretch Cover

Item #	Product Dimensions	UOM
8160-P	16" (W) x 16" (D) x 4"-2" (H)	1/ea, 4/cs
8161-P	18" (W) x 16" (D) x 4"-2" (H)	1/ea, 4/cs
8162-P	20" (W) x 16" (D) x 4"-2" (H)	1/ea, 4/cs
8163-P	22" (W) x 18" (D) x 4"-2" (H)	1/ea, 4/cs

- Wedge design helps prevent patient from sliding forward.
- Firm foundation reduces pressure caused by sling-seat hammockings.
- High-density foam increases stability and comfort.
- Foam pommel controls sliding by eliminating posterior pelvic tilt.

### specifications

Cover Material	Fluid-Resistant Stretch Nylon, Half P/U, Half Vinyl
Weight Capacity	250 lbs.
Warranty	Limited 1 Year

## Swing-Away Footrests



Item #	Product Description	For Use With	UOM
RTLREB-12	Plastic Foot plate	Rebel	1/pr



Item #	Product Description	For Use With	UOM
STDS3J24SF	Plastic Foot plate	Blue Streak, Silver Sport 1, Silver Sport 2, Cruiser III, Cirrus IV, Viper, Viper Plus GT, Viper Plus GT Reclining.	1/pr



Item #	Product Description	For Use With	UOM
JL3-4SF-TF	Plastic Foot plate	Viper (12" and 14")	1/pr

## Swing-Away Footrests



Item #	Product Description	For Use With	UOM
STDSF-TF	Aluminum Foot plate	Bariatric Sentra EC, Heavy Duty (STD20EC with Dual Cross Bar thru STD24EC Series) and Bariatric Sentra Extra Heavy Duty (STD20 thru STD24 Series)	1/pr



Item #	Product Description	For Use With	UOM
HDSF	Aluminum Foot plate	Bariatric Sentra Heavy Duty (Deluxe) Extra Wide STDS26 - STD30 Series	1/pr



Item #	Product Description	For Use With	UOM
PH-SF	Aluminum Foot plate	Bariatric Sentra EC Heavy Duty (Deluxe) Extra-Wide STDS26 - STD30 Series	1/pr



Item #	Product Description	For Use With	UOM
A5SF-16	Plastic Foot plate	Cougar 16" (AK516 Series)	1/pr
A5SF-18	Plastic Foot plate	Cougar 18" (AK518 Series)	1/pr
A5SF-20	Plastic Foot plate	Cougar 20" (AK520 Series)	1/pr

## Swing-away Elevating Leg rests



Item #	Product Description	For Use With	UOM
STDELR-TF	Aluminum Foot plate	For use with Bariatric Sentra EC Heavy Duty, Bariatric Sentra Extra Heavy Duty, Sentra Full Reclining	1/pr



Item #	Product Description	For Use With	UOM
PHELR	Aluminum Foot plate	Bariatric Sentra EC Heavy Duty Bariatric Sentra EC Heavy Duty	1/pr



Item #	Product Description	For Use With	UOM
JLELR-TF	Plastic Foot plate	Viper (12" and 14"), Viper Plus GT Full Reclining (12" and 14")	1/pr



Item #	Product Description	For Use With	UOM
A5LELR-16	Plastic Foot plate	16" Cougar (AK516 Series)	1/pr
A5LELR-18	Plastic Foot plate	18" Cougar (AK518 Series)	1/pr
A5LELR-20	Plastic Foot plate	20" Cougar (AK520 Series)	1/pr



Item #	Product Description	For Use With	UOM
LK3JELR	Plastic Foot plate	Blue Streak, Silver Sport 1, Silver Sport 2, Chrome Sport, Cruiser III, Cirrus IV, Viper, Viper Plus GT, Viper Plus GT Reclining.	1/pr



## Kanga Wheelchairs



Item #	Product Description	Color	UOM
KG 1035HYR	Hanger, Right	Yellow	1/ea
KG 1035HYL	Hanger, Left	Yellow	1/ea
KG 1035HRR	Hanger, Right	Red	1/ea
KG 1035HRL	Hanger, Left	Blue	1/ea
KG 1035HBR	Hanger Left	Blue	1/ea
KG 1035HBL	Hanger	Blue	1/ea
KG 1036	Hanger Stem		1/ea
KG 1037	Hanger Clamp		1/ea
KG 1038FPR	Foot plate & Mounting Block, 10" Rt		1/ea
KG 1038FPL	Foot plate & Mounting Block, 10" Lt		1/ea
KG 1238FPR	Foot plate & Mounting Block, 12" & 14" Rt.		1/ea
KG 1238FPL	Foot plate & Mounting Block, 12" & 14" Lt.		1/ea

## Anti-Fold Device



Item #	Product Description	For Use With	UOM
STDS806	Anti-Fold Bar	16" - 22" Seat Widths Wheelchairs	1/ea

- Installs across bottom of chair to prevent folding.

## Heel loops



(shown on footrests)

Item #	Product Description	UOM
STDS831	Heel Loops	1/pr

## Wheelchair Cane/Crutch Holder



Item #	Product Description	UOM
STDS1034	Wheelchair Cane/Crutch Holder	1/ea

## Universal Telescoping I.V. Pole



Item #	Product Description	UOM
STDS820	Telescoping I.V. Pole Attachment	1/ea

- Universal spacing sleeve can be added or removed to accommodate most Drive (except Sentra Reclining, Viper Reclining, Sentra Extra Wide and Sentra EC Extra Wide) and other leading manufacturers' wheelchairs.

## Overhead Adjustable Anti-Theft Device



Item #	Product Description	UOM
STDS823	Overhead Anti-Theft Device	1/ea
STDS821	Overhead Anti-Theft Device With IV Hooks	1/ea
STDS834	Overhead Anti-Theft Device Single Pole	1/ea

## Oxygen “E” Cylinder Holder



Item #	Product Description	For Use With	UOM
STDS803	Universal Oxygen “E” Cylinder Holder	Wheelchairs with removable arms. Does not fit wheelchairs with flip-back arms or reclining wheelchairs	1/ea
STDS804	Universal Oxygen “E” Cylinder Holder with IV Pole Attachment	Drive and most other leading manufacturers’ wheelchairs. (Excluding Cirrus, Sentra Heavy Duty Extra Wide, Sentra Reclining, Cruiser III, Viper Reclining and Cougar)	1/ea

## Oblique Projection Handrim



Item #	Product Description	For Use With	UOM
STDS1022	Oblique Projection Handrim	Sentra Reclining, Viper Reclining, Viper and Cirrus IV with silver vein finish wheelchairs	1/ea

- Provides user with additional “grip” when propelling a wheelchair.
- Easily attaches to wheel.
- Soft, rubber coating is comfortable and long lasting.

## Flat-Free Wheel with Handrim



Item #	Product Description	For Use With	UOM
STDS840	Flat-free Wheel With Handrims	Sentra Reclining, Viper Reclining, Viper, and Cirrus IV wheelchairs	1/ea

## Standard Caster



Item #	Product Description	For Use With	UOM
STDS1002	Standard 8" Caster	Sentra Reclining, Viper GT Reclining, Viper, Viper Plus GT, Cruiser III wheelchairs	1/ea

- Low profile, 8-spoke, nylon wheel.
- 8" x 1" Pyramid Tire.

## specifications

Warranty	60 Days
----------	---------

## Standard 24" Wheel



Item #	Product Description	For Use With	UOM
STDS1001	Standard 24" Wheel	Sentra Reclining, Viper Reclining, Viper and Viper GT wheelchairs	1/ea

- Custom polyurethane no-flat tire.
- Composite hook-beak rim keeps tires on and prevents roll-offs.
- Integrated rim and hub allow years of trouble-free operation.
- 300 lb. Weight Capacity.

## specifications

Warranty	60 Days
----------	---------

## One-Arm Drive



Item #	Product Description	For Use With	UOM
STDS4055R	Right (For use with 18" and 20")	18" and 20" Viper	1/ea
STDS4055L	Left (For use with 18" and 20")	18" and 20" Viper	1/ea
STDS4058R	Right	18" Sentra EC	1/ea
STDS4058L	Left	18" Sentra EC	1/ea
STDS4056	Not side specific	Viper GT 16", 18" and 20"	1/ea

- Allows wheelchair to be propelled with one arm.

## Tinnerman Nuts



Item #	Product Description	For Use With	UOM
STDSNUT	Tinnerman Nuts	Most Drive and other leading manufacturers' wheelchairs	1/pr

## Super-Hemi Kit



Item #	Product Description	Product Seat Height	UOM
STDSSHK	Super Hemi Kit	Lowers seat height to 15.5"	1/ea

## Wheel Lock Extensions



Item #	Product Description	For Use With	UOM
STDS601	Wheel Lock Extension	Cirrus IV and Cougar Wheelchairs	1/ea
STDS801	Wheel Lock Extension	Cirrus IV, Cougar, Blue Streak, Sentra EC Heavy Duty, Sentra Extra HD, Bariatric Sentra EC, Extra-Extra Wide Wheelchairs	1/ea
STDS801GT	Wheel Lock Extension	Chrome Sport, Viper GT, Cruiser III, Rebel, and Silver Sport 1 & 2 (excluding serial # 3J) Wheelchairs	1/ea

## Limb Support



Item #	Product Description	For Use With	UOM
WASR	Limb Support, Right	Blue Streak, Silver Sport 1 & 2, Chrome Sport, Bariatric Sentra EC Heavy Duty, Bariatric Sentra Heavy Duty, Sentra Full Reclining, Cruiser III, Cirrus IV, Viper, Viper Plus GT, Viper Plus Reclining Wheelchairs	1/ea
WASL	Limb Support, Left	Blue Streak, Silver Sport I & II, Chrome Sport, Bariatric Sentra EC Heavy Duty, Bariatric Sentra Heavy Duty, Sentra Full Reclining, Cruiser III, Cirrus IV, Viper, Viper Plus GT, Viper Plus Reclining. Wheelchairs	1/ea

## Low-Profile Amputee Seat



Item #	Product Size	UOM
RTL6120	16" (W) x 16" (D)	1/ea
RTL6121	16" (W) x 18" (D)	1/ea
RTL6122	18" (W) x 16" (D)	1/ea
RTL6123	18" (W) x 18" (D)	1/ea
RTL6124	20" (W) x 18" (D)	1/ea
RTL6125	20" (W) x 20" (D)	1/ea

- Provides a platform to prevent knee flexion contractures.
- Fully retractable extensions for ease of transfers.
- Easily removed from chair when not required.



## Large, Deluxe Wheelchair Carry Pouch



Item #	UOM
STDS6005-1	1/cs

- Easily attaches to wheelchair.
- Comes with large, zippered pocket and a mesh pocket with Velcro® closures.
- Made of durable, easy-to-clean nylon.
- Fits most wheelchairs.
- Size: 15" x 15" x 5".

### specifications

Warranty	90 days
----------	---------

## Universal Oxygen Cylinder Carry Bag



Item #	UOM
STDS6008-1	1/ea

- Adjustable, for use with "D" and "E" cylinders.
- Top and bottom clasps easily attach for secure fit to wheelchair.
- Two carry handles.
- For use with most manufacturers' wheelchairs.
- Made of durable, easy-to-clean nylon.
- Size: 26.5" x 7.5" x 4.75".

### specifications

Warranty	90 days
----------	---------

## Carry Bag for Standard Style Transport Chairs and SL18



Item #	UOM
835N	1/ea

- For use with SL18 transport chair.
- Shoulder strap provides easy and convenient way to carry a transport chair.
- Made of durable nylon.
- Large 20" x 17" x 17" area with zipper closure.

### specifications

Warranty	90 Days
----------	---------

## Chart Carry Pocket



Item #	Color	For Use With	UOM
STDS835	Nylon	16", 18" and 20" Wheelchairs with Nylon Upholstery	1/ea
STDS836	Vinyl	16", 18" and 20" Wheelchairs	1/ea

## Wheelchair Tray



Item #	Product Description	Product Seat Width	Product Size	UOM
STDS5050	Easy-To-Clean Surface. Accommodates Wheelchairs	16"- 20"	Tray Size: 24" x 20" x 1/2"	1/ea

## Universal Cup Holder



- Easily attaches to wheelchairs, rollators or walkers with tubing diameter from 5/8" to 1".
- Special clamp insert can be added or removed as necessary to accommodate different size tubing.
- Made with durable, lightweight plastic.
- Installation and removal is easy with adjustment knob and clamp.
- Dimensions: 3" (W) x 3" (H).

Item #	UOM
STDS1040S	1/ea

### specifications

Warranty	Limited 1 Year
----------	----------------



## Wheelchair/Scooter Ramps

Item #	Product Description	Product Size	UOM
STDS1093	Single Fold with Carry Bag	2' x 30"	1/ea
STDS1094	Single Fold with Carry Bag	3' x 30"	1/ea
STDS1095	Single Fold with Carry Bag	4' x 30"	1/ea
STDS1096	Single Fold with Carry Bag	5' x 30"	1/ea
STDS1097	Single Fold with Carry Bag	6' x 30"	1/ea

- Designed to transition wheelchair or scooter from one surface to another.
- Durable, lightweight construction.
- Comes with carry bag.
- Perforated slots keep water from collecting on ramp.
- Variety of sizes to meet many elevation changes.
- Weight capacity: 600 lbs.

### specifications

Weight Limit	600 lbs.
Warranty	Limited Lifetime

### accessories and parts

STDS1093-B	Bag for STDS1093	1/ea
STDS1094-B	Bag for STDS1094	1/ea
STDS1095-B	Bag for STDS1095	1/ea
STDS1096-B	Bag for STDS1096	1/ea
STDS1097-B	Bag for STDS1097	1/ea



Doormatic Automatic Door Opener

Item #	UOM
850100300	1/ea

- The Doormatic revolutionizes opening doors.
- No drilling, no tools, no structural changes to door or door frame.
- Automatically opens and closes internal doors.
- Easy "tool-free" installation with Velcro®.
- Battery operated.
- Simple "push" or "pull" activates the automatic door opener.
- Easy-to-read menu.
- Waiting time and speed can be preset.
- Operates on many different surfaces.
- Comes with obstacle detection for added safety.
- Add optional remote control (Model #850000165) for those who cannot push or pull door.
- Add an optional motion sensor (Model #850000128) for those who cannot push or pull door and cannot operate remote control. Door opens by breaking the beam. (Can be preset)

specifications

Warranty	Limited 1 Year
----------	----------------

accessories

850000165	Remote Control	1/ea
850000128	Motion Sensor	1/ea

## Handicap Access Ramp - How to Determine the Correct Length

- Your Drive owner's manual will determine how much of an incline your power wheelchair or scooter can climb.
- For a straight incline, measure the distance from the incline origin to the highest point.
- Measure the total width of the area you plan to place the ramp. Note that the ramp will need to be smaller than the total width in order to fit.
- Measure the total vertical climb (straight up and down) that you plan to go up.
- Use these measurements to find the length of the ramp required In accordance with the ADA requirements.

## Residential Use Ramp Chart

Occupied - 2:12 Ratio (9.5° angle) (Sitting in chair when loading)		Unoccupied - 3:12 Ratio (14.5° angle) (Nobody in the chair when loading)	
Rise Inches	Required Ramp Length - Feet	Rise Inches	Required Ramp Length - Feet
4"	2'	4"	1'
6"	3'	6"	2'
4"	2'	4"	1'
10"	5'	10"	3'
4"	2'	4"	1'

## ADA Requirements

### RESIDENTIAL USE:

**For loading unoccupied wheelchairs/scooters (unoccupied means nobody is sitting in the wheelchair/scooter while it navigates up the ramp):** ADA recommends a 3:12 slope which means for every 3" of vertical rise you are required to have at least one foot of ramp (14.5° incline)

**To determine the length of ramp needed:** Measure the vertical rise from the ground to where the ramp will sit on the vehicle, stairs or threshold. Take that measurement (inches) and divide it by 3. This will determine the length of ramp needed for an unoccupied power chair. Example: 24 inches of rise requires an 8 foot ramp minimum (24 divided by 3).

**For loading occupied power chairs/scooters (someone is riding on the power wheelchair/scooter):** ADA recommends a 2:12 slope which means every 2" of vertical rise requires one foot of ramp (9.5° of incline)

**To determine the length of ramp needed for residential usage (Note: Business use requires a 1:12 slope):** ADA recommends a 2:12 slope which means every 2" of vertical rise requires one foot of ramp (9.5° of incline)

### BUSINESS USE:

**For loading occupied power chairs/scooters (someone is riding on the power wheelchair/scooter):** ADA recommends a 1:12 slope which means every 1" of vertical rise requires one foot of ramp (5° of incline).

**To determine the length of ramp needed for business usage:** Measure the rise from the ground to where the ramp will sit on the vehicle, stairs or threshold. This measurement equals the length of ramp needed in feet. Example: 24 inches of rise requires a 24 foot ramp minimum (24 divided by 1).

This chart below is to help get a better understanding as to degree of angle each ramp length will give you.

## Ramp Incline Chart

				16.1°	20"
				14.5°	18"
			15.5°	12.8°	16"
		17°	13.5°	11.2°	14"
		14.5°	11.5°	9.6°	12"
	16.1°	12°	9.6°	8°	10"
	14.5°	10.8°	8.6°	7.2°	9"
	12.8°	9.6°	7.7°	6.4°	8"
17°	11.2°	8.4°	6.7°	5.6°	7"
14.5°	9.6°	7.2°	5.7°	5.6°	6"
12°	8°	6°	4.8°	4°	5"
9.6°	6.4°	4.8°	3.8°	3.2°	4"
7.2°	4.8°	3.6°	2.9°	2.4°	3"
2'	3'	4'	5'	6'	

Due to product improvements and changes, all images in this catalog are subject to change.













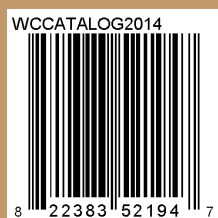
## 2014 WHEELCHAIRS PRODUCT CATALOG

### Drive Medical Design & Manufacturing

99 Seaview Boulevard  
Port Washington, NY 11050

t: 877.224.0946 | f: 516.998.4601

[www.drivemedical.com](http://www.drivemedical.com)



PRINTED IN CHINA

Copyright© 2014 Medical Depot, Inc. dba Drive Medical Design and Manufacturing®, 99 Seaview Boulevard, Port Washington, NY 11050. All trademarks used in association with the sale of products of Drive Medical Design and Manufacturing are trademarks owned by Medical Depot, Inc. All other trademarks, trade names, service marks and logos referenced herein belong to their respective companies.